

West September 2015

FLASHshipTM

Speeding to
Success:
**A TALK WITH
VICKI NEWMAN**

Hugo Hotel
Features
**ROCKWOOD
PULLS**

FLASHship
Product Catalog

The ASSA ABLOY FLASHshipTM
Program includes products
from leading brands:

MARKAR
McKINNEY
PEMKO
RIXSON
ROCKWOOD
YALE

ASSA ABLOY

The global leader in
door opening solutions



Copyright © 2011 ASSA ABLOY Inc. All rights reserved.

Accessories Make a Difference

ASSA ABLOY

Selecting the right high quality accessories for your door openings really matters!

Pemko, Rockwood and McKinney products save energy, control light and sound transmission, decrease air leakage and prevent bacterial transfer. This helps save lives, save money, and improve the quality of life.

For more information contact your local ASSA ABLOY Door Security Solutions representative at www.assaabloydss.com, click on Sales Support or scan the code below.



McKinney

PEMKO

ROCKWOOD®

The global leader in
door opening solutions

04

FLASHship™

General Information

Finishes

Terms & Conditions

11

Yale®

Product Comparison
Charts

Mortise Locks &
Cylinders

Cylindrical Locks

Cylindrical Deadbolts

Exit Devices

Exit Device Trim,
Mullions & Cylinders

Door Closers

Touchscreen Locks

35

McKinney®

Spring Hinges

3 & 5 Knuckle Hinges

MacPro® & ElectroLynx®
Hinges

38

Pemko

Markar Stainless Steel Pin &
Barrel Continuous Hinges
Thresholds

Door Shoes, Jamb Sets,
Sweeps & Astragals

Rain Drips, Automatic Door
Bottoms & Aluminum
Geared Continuous Hinges

Adhesive Gaskets

Lite Kits

48

Rockwood®

Push & Pull Plates

Door Pulls, Lock
Protectors & Door Stops

Flush Bolts, Dust Proof
Strikes, Surface Bolts,
Roller Latches, Door
Guards

Silencers, Knockers,
Coat Hooks, Misc. Pulls,
Coordinators & Flush Bolts

55

Rixson®

Pivot Sets &
Intermediate Pivots
Checkmate® Stops &
Holders

Electromagnetic Door
Holder/Releases

58

Order Forms



FLASHship™

Welcome to our
inaugural issue of
FLASHship magazine!

FLASHship, offering select products from six brands with 24-hour shipping is the latest ASSA ABLOY program designed to help you 'do business better'.

Use FLASHship to help reduce inventory, improve your lead times and control your freight costs – and simplify ordering! Products from all six of the ASSA ABLOY brands are available for order on one order form, and you receive one invoice. You can even place your order online for quickest response.

Check out pages 11-54 for a listing of all the products available through this program.

Contact us with any questions at 800-438-1951 or speak with your local ASSA ABLOY Door Security Solutions representative.

FLASHship™ Program Information

The ASSA ABLOY FLASHship™ West program allows the convenience of placing a single order with Yale for architectural hardware plus accessory products from five different ASSA ABLOY brands. This program contains selected popular products from Markar, McKinney, Pemko, Rixson, Rockwood, and Yale all shipping from our Ventura, California location within 24-hours.

Enjoy the convenience of one purchase order, one acknowledgement

QUALIFICATIONS

To place a qualifying order for the FLASHship program, customer must either

- a. Use the "FLASHship Order Form" and indicate product by FLASHship part number as stated in the current FLASHship program book, or
- b. Use own purchase order with "FLASHship Program" prominently indicated. Also, products must be indicated by their FLASHship part number or by the exact model number for available product configurations in the current FLASHship West program book, or
- c. Enter FLASHship order by using the on-line order entry process.

ONLINE ORDER ENTRY

FLASHship West orders can be entered by using our convenient online order entry system. The dedicated FLASHship icon takes the user directly to the web-based form which offers easy-to-use drop-down menus to assist with product search and selection.

Contact your customer service representative to set up online order entry access and training.

Order Form

Please use the form on pages 58-59 when placing orders for FLASHship products.

Lead Time

Lead time is 24-hours from receipt of order. We reserve the right to limit quantities.

Only items printed in this current publication will be given 24-hour lead times for shipping.

Part Numbers

Specific part numbers are assigned to each unique configuration. These FLASHship part numbers should be included on the purchase order to ensure ease of processing.

Mixed Orders

To ensure expedited processing, FLASHship products must be submitted on separate purchase orders. Any orders received including items that are not currently published in the FLASHship offering will be returned to the customer for re-submittal.

The website for Online Order Entry is www.assaabloydss.com/extranet and then click the FLASHship icon. Contact your customer service representative to set up online order entry access and training.



Contacts

Customer Service

For FLASHship customer service questions and/or issues, call:
1-800-438-1951

Hours of Operation

7:00 am – 3:30 pm PST

Fax FLASHship orders to 877-888-2772, email to flashship@assaabloy.com or use Online Order Entry at www.assaabloydss.com/extranet by clicking the FLASHship icon.

Technical Product Support

For technical questions and/or issues with products, please contact the brands' technical support.

ASSA ABLOY Service Centers

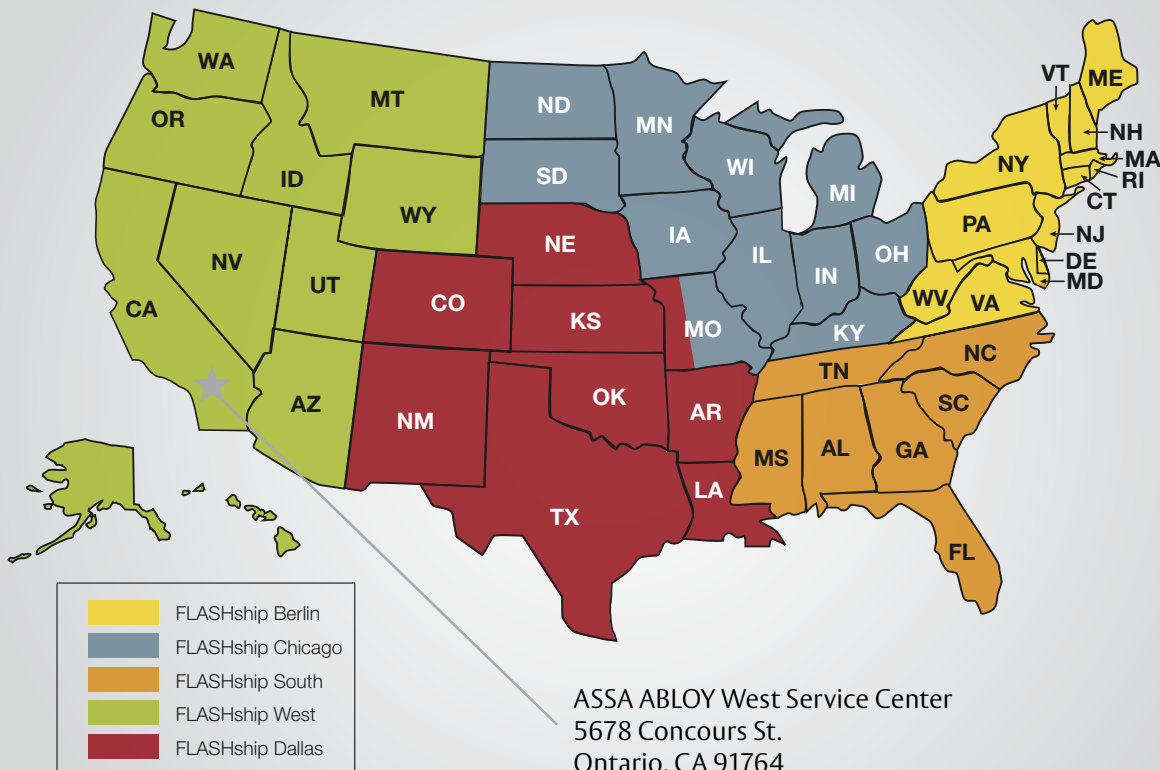
FLASHship products are fully stocked at your local service center, which brings doors, frames and hardware closer to you and your job sites

Brand	Hours of Operation	Toll-Free
McKinney	8:00 am – 4:30 pm EST	800-346-7707
Pemko/Markar	7:00 am – 7:00 pm CST	800-824-3018
Rixson	8:00 am – 4:30 pm EST	800-457-5670
Rockwood	8:00 am - 7:00 pm EST Mon.-Thurs. 8:00 am - 4:30 pm EST Friday	800-458-2424
Yale	8:00 am – 4:30 pm EST	800-438-1951 x 5033

Finishes

ANSI/BHMA Code	Finish Description	US
600	Primer	P
603	Zinc Plated	2C
605	Bright Brass, Clear Coated	3
612	Satin Bronze, Clear Coated	10
613E	Dark Oxidized Satin Bronze, Oil Rubbed - equivalent	10BE
619	Satin Nickel Plated, Clear Coated	15
625	Bright Chrome Plated	26
626	Satin Chrome Plated	26D
628	Aluminum, Clear Anodized	28
630	Satin Stainless Steel	32D
689	Aluminum Painted	ALM
690	Dark Bronze Painted	
—	Aluminum, Extra Dark Bronze Anodized	314
711	Aluminum, Black Anodized	315
—	Bright Nickel	NP
—	Bright Chrome Plate	CRM
—	Dull Chrome	DCRM
—	Antique Brass	ANT
—	Bright Brass	BRS
—	Satin Nickel	STNN

FLASHship Territories



*All territories should use FLASHship Berlin for FLASHship Masterkeying

Speeding to Success: ASSA ABLOY's FLASHship Program Provides 24-Hour Shipping Throughout the U.S.

*An interview with Vicki Newman,
Director of Business Development, ASSA ABLOY*

"Doing Business Better"

John Donoghue, President of TACC, appreciates the ability to reduce inventory and more efficiently manage freight. Washington Architectural Hardware owner Don Anderson states the low prepaid freight allowance and short lead times have become an important component in his business plan. Jim Pellegrini, Vice President of Park Avenue Building Supplies, enjoys looking like a hero to his valued customers. These ASSA ABLOY partners are located across the country and serve varying channels in the architectural hardware industry. What they all have in common is their recognition of the value ASSA ABLOY FLASHship brings to their companies.

Convenient, Efficient and Cost Effective Packages

When ASSA ABLOY FLASHship launched in June 2013, the goal was to bring additional value to our customers by providing quality hardware for the entire opening in an efficient and expedient way. The industry leading brands of Markar, McKinney, Pemko, Rixson, Rockwood and Yale were now orderable on one purchase order and shipped together in 24 hours, creating a convenient, efficient and cost effective package. That initial Berlin, CT launch was so successful, a second location in Ventura, CA opened the following December. Within 6 months, FLASHship was supplying over 850 high demand ASSA ABLOY products to hundreds of customers from coast to coast with 24 hour shipping.

With strong customer support for faster delivery, a third FLASHship location in Austell, GA opened in December 2014. With these successes under our belt, we are very pleased to announce the opening of FLASHship Dallas on May 4, 2015. ASSA ABLOY customers in forty two states now enjoy full hardware opening deliveries in 2 days or less after receipt of purchase order. With additional locations in development, we will soon reach our goal of supplying customers in all 48 continental states with not only 24 hour shipping but delivery in two days or less.

FLASHship currently offers hardware providers the most comprehensive one stop selection available, encompassing more than 850 high demand products shipped in 24 hours from one of four strategically placed warehouses to maximize one to two day delivery. With a low \$1500 prepaid freight option, FLASHship has quickly become the hardware supply program of choice by customers throughout the nation. With a 98% on time order fill rate, FLASHship is recognized as the most dependable, convenient and cost saving supply option in the industry.

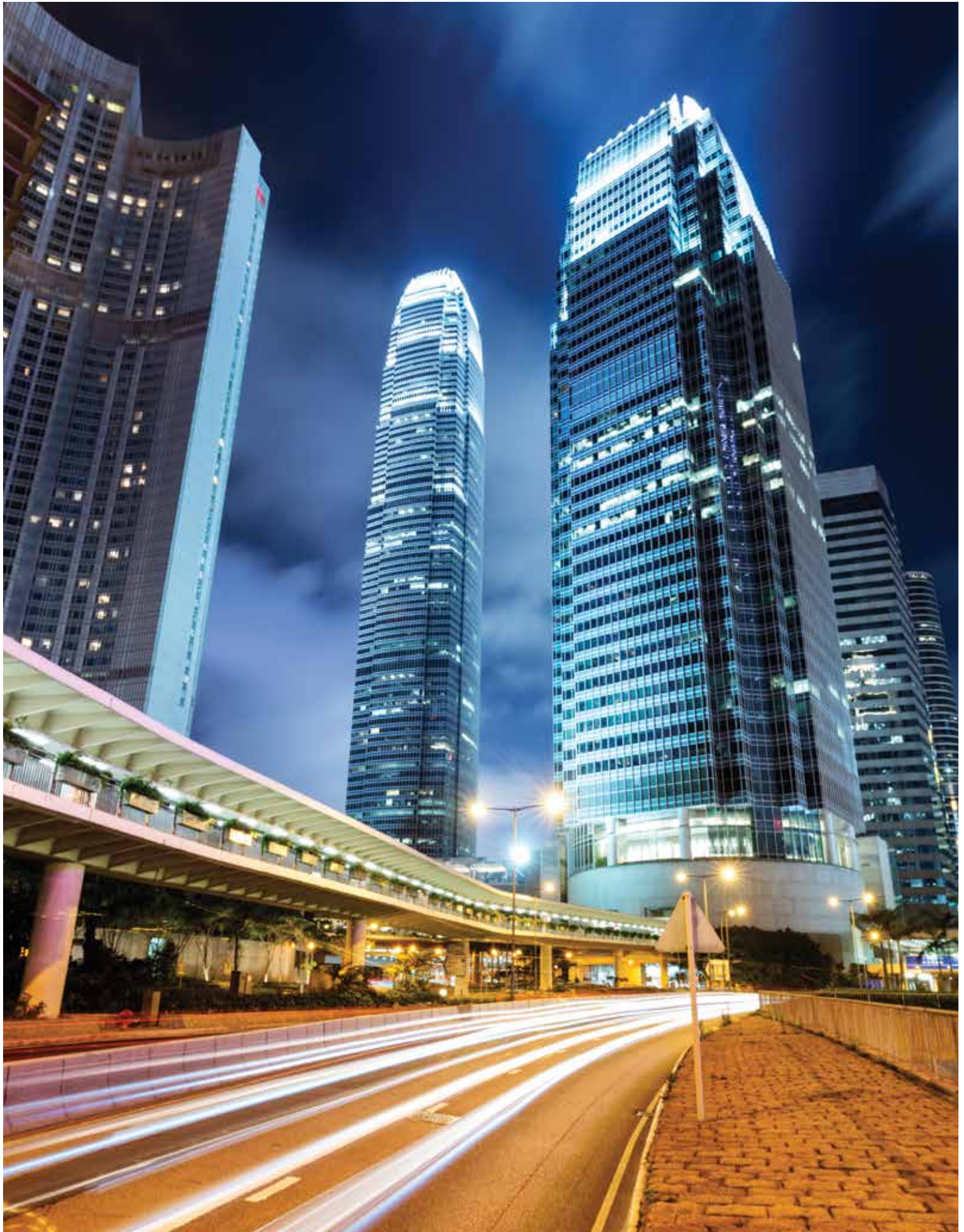
Supporting our Partnerships

"The overwhelming success of FLASHship can be attributed to the attention to detail in meeting the needs of our customers," said Vicki Newman, Director of Business Development for ASSA ABLOY Door Security Solutions and the driving force behind FLASHship. "We've structured a program that our competitors simply cannot replicate."

Newman believes that the success of FLASHship reflects ASSA ABLOY's commitment to the success of hardware suppliers across the country.

"FLASHship was developed, designed and driven by the fact that we consider contract hardware distributors our business partners," she said. "Our goal was to create a supply chain that enables our customers to compete in the discretionary business channel by reducing their inventory and shipping costs while ensuring their ability to respond quickly to opportunities critical to their success."

"I knew we had achieved our goal when the most repeated comment from our customers was that the value of FLASHship was so comprehensive it appeared to have been structured from their side of the desk. The bottom line is that we have truly invested in our customers' businesses by implementing the FLASHship program."



Designer and Architect Marcello Pozzi Adds Detail and Emotion to New Soho Hotel with Rockwood Pulls

Hotel Hugo defines industrial chic. The upscale, contemporary hotel was the vision of designer and architect Marcello Pozzi and Nobutaka Ashihara, the project's architect of record. Recently opened in SoHo, the design blends the neighborhood's sophisticated atmosphere with the gritty underpinnings of New York City in a style Pozzi refers to as a game of contrast, a juxtaposition of finishes. There is a striking interplay between opposites throughout, polished stainless steel, for example, that complements rough concrete. This careful balance isn't an accident; Pozzi relied on seemingly minor details, like ASSA ABLOY's Rockwood door pulls, to create Hotel Hugo's distinct character.

The Importance of Hardware

When it comes to tying together a space's look and feel, Pozzi believes hardware does a lot of the heavy lifting. Since the door pull serves as each guest's first touch point with the hotel, Pozzi wanted to infuse the experience of opening the front door for the first time with emotional resonance, so he insisted on something more dramatic and less predictable than the stainless steel typically used for commercial entrances.

"Hardware gives character to a space, even more so than other design elements," said Pozzi. "It's both visual and interactive, creating character through sight and touch."

Having used Rockwood for prior projects, the manufacturer's

high-end hand-stitched leather offset pulls instantly came to mind when Pozzi was looking for hardware that did its job with enough style to also serve as a critical design element. This particular style of pulls is very contemporary. At the same time, unlike most office hardware, it also emulates warmth. He chose pulls with thick 1½" soft leather grips to elicit a stronger, conscious reaction from guests as they enter. And because he had worked with Rockwood before, Pozzi knew the selected hardware would exceed expectations in terms of quality.

Inside Hotel Hugo

With soaring 12-foot wood doors, the six-foot Rockwood pulls are a perfect fit. Since Pozzi insisted on design consistency beyond the front entrance, he used a variety of Rockwood architectural door pulls in many other parts of the hotel including entry, restaurant, and doors in public areas such as the meeting room and business center.

The restaurant offers more examples of Pozzi's flair for mixing elements and finishes. The bar includes a polished concrete countertop, boldly accented with polished stainless steel hardware. Pozzi used two pull sizes for the doors in the restaurant, a 72-inch pull for most doors and a 30-inch version for the private dining area in the back. The 72-inch pulls attach to the door at three points, which is unique in the industry. Rockwood offers an optional mid-post which provides added support and visual detail for long door pulls. Pozzi also chose rounded end pulls, which makes the entrances to the restaurant and private dining area look more luxurious.

Hotel Hugo features a wood storefront, with modern proportions and detail. After the custom-built 12-foot wood storefront doors there are secondary glass doors – yet another example of traditional juxtaposed with contemporary – all tied together with the elegant Rockwood door pulls. Pozzi gave additional exposure to the hardware by using accent lights, making the hardware stand out against both the wood and the glass doors.

A Critical Design Element

Although quite contemporary, there's a retro feel in the hotel restrooms and suites, and the exposed hardware remains a constant detail. As most industrial places are characterized by hardware and steel, statement hardware with character is central to the hotel's overall design.

Hardware often subconsciously gives character to a space. All of the handrails, door pulls, handles, decorative lights and even trim around mirrors are thoughtfully chosen – Rockwood pulls are critical in communicating that the guest has indeed arrived at Hotel Hugo.



Terms and Conditions

Minimum Order

Minimum invoice is \$50.00 net product value.

Quotes

Quoted projects do not qualify for the FLASHship™ program. Standard buying program discounts only.

Freight

All orders are shipped FOB factory/warehouse, except as expressly provided below. When delivered to the Transportation Company, the Purchaser assumes the risk of loss or damage in transit.

Customer orders with net product value in excess of \$1,500.00 for the continental US and \$2,000.00 for Alaska and Hawaii will be shipped prepaid by the ASSA ABLOY carrier of choice to a single destination point in the United States.

Customer orders with net product value less than \$1,500.00 for the continental United States and \$2,000.00 for Alaska and Hawaii will be shipped prepaid by the ASSA ABLOY carrier of choice and freight and handling charges will be added to the customer's invoice.

A minimum freight and handling charge of \$15.00 will be charged on orders with net product value of \$400.00 or less.

For orders with net product value greater than \$400.00 and less than \$1,500.00, freight charges will be calculated as a percentage of the net invoice value and will be added to Customer's invoice. The percentage is based on the National U.S. Average On Highway Diesel Fuel Prices as reported by the US Department of Energy in effect at the beginning of each quarter. On the first Monday of each quarter, the new rate will be published on the ASSA ABLOY Door Security Solutions extranet and will go into effect on the 2nd Monday of the quarter. Please refer to the ASSA ABLOY distributor extranet for the rate chart and information on the current freight charge percentage. The percentage in effect at the time of shipment of the order will be charged.

If a customer provides their own freight account number for the freight charges, ASSA ABLOY will apply a handling fee of \$25.00 to the invoice.

Expedited shipping options – If the customer requests an expedited method of shipment such as "Next Day Air" the charges will be prepaid by ASSA ABLOY and the full rate for the service, as published by the carrier, will be added to the customer's invoice.

Packing – ASSA ABLOY will pack, mark and ship the products according to its standard procedures for shipment, unless the parties agree, in writing, that ASSA ABLOY will comply with any special instructions provided by the customer. Special instructions must be submitted, in writing, at time of order placement. Compliance with special instructions may result in an increased price.

Delivery

Orders will be acknowledged and given a scheduled delivery date based on estimated manufacturing lead times. Complete information is required to process all orders. Orders with insufficient information for processing (i.e. part numbers) may be subject to extended lead times which are relative to the time required in obtaining the necessary information for order processing. Manufacturing lead time will begin once all information is received to process an order. Yale will use reasonable efforts to deliver products as estimated, but makes no guarantees as to delivery dates.

Yale will not be liable for back charges incurred based on availability of product or as a result of delays in delivery caused by insufficient information required to process an order. Yale will not be held responsible for delays in delivery caused by strikes, fires, floods or any other causes beyond our control, including the delivery of material to us. Under no circumstances shall Yale be liable or accountable for consequential damages due to failure of delivery.

Changes/Cancellations

Due to the promptness of delivery, no changes or cancellations can be accepted.

Prices

All shipments will be made at prices prevailing at time of shipment.

Terms

Invoices dated the 1st through the 15th will be due for 2% discount on the 10th of the following month. Invoices dated the 16th through the 31st will be due for 2% discount on the 25th of the following month. Net immediately thereafter.

Returned Goods

All FLASHship products returned as "Goodwill" must meet the following criteria to be considered a return:

- Be in original, unmarked and undamaged cartons.
- Shipped and invoiced within the previous 30 days.

No restocking fee will apply. Upon receipt and verification that the returned merchandise meets the foregoing conditions, a credit will be issued for the original invoice amount.

Consult the current Price Books for pricing information and a complete list of Terms & Conditions.

Warranties

All standard limited warranties apply. Consult current Price Books for a complete list of warranty information.



inTouch®



The reliability
of Yale locks...

With today's
touchscreen technology...

A world
of new options
for building
owners.

*Bring the interactive
touchscreen to life with a
simple inTouch.*



Yale brings touchscreen access to robust cylindrical locksets – modern electronics combine with stand-alone security.

inTouch® is recommended for anywhere requiring simple controlled access – management offices, storerooms, restroom doors, staff lounges, records storage areas, airport terminals, IT departments, and many more.

Get *inTouch*.

1-800-438-1951
www.yalelocks.com

An ASSA ABLOY Group brand

ASSA ABLOY



Mortise Lock Comparison						
Yale	Cal-Royal	Dorma	Falcon	Hager	PDQ	Stanley Commercial
8800FL	M8000	ML9000	M	3800	MR	QMS100

Grade 1 Cylindrical Lock Comparison						
Yale	Cal-Royal	Dorma	Falcon	Hager	PDQ	Stanley Commercial
4700LN	CGN	CL800	T	3400	GT	QCL100

Grade 2 Cylindrical Lock Comparison						
Yale	Cal-Royal	Dorma	Falcon	Hager	PDQ	Stanley Commercial
4600LN	SL	C500	B/W	3500	GP/SA	QCL200

Deadbolt Comparison							
	Yale	Cal-Royal	Dorma	Falcon	Hager	PDQ	Stanley Commercial
Grade 1	D100	CRB	D800	D100	3100	KT100	QDB100
Grade 2	D200	T	DB600	D200	3200	KV100	QDB200

Grade 1 Heavy Duty Closer Comparison						
Yale	Cal-Royal	Dorma	Falcon	Hager	PDQ	Stanley Commercial
1100BF	300	7400	SC61	5300	3100	QDC100

Grade 1 Architectural Closer Comparison						
Yale	Cal-Royal	Dorma	Falcon	Hager	PDQ	Stanley Commercial
2700	N900	8600	SC81	5200	5300	QDC200

Grade 1 Commercial Exit Device Comparison - Stainless Steel						
Yale	Cal-Royal	Dorma	Falcon	Hager	PDQ	Stanley Commercial
5800	CR441	8900	SC71	5100	7400	QED100

Grade 2 Cylindrical Lock Comparison						
Yale	Cal-Royal	Dorma	Falcon	Hager	PDQ	Stanley Commercial
1800	2200	8300	19	4700	4200	QED300

Grade 1 Commercial Exit Device Comparison - Stainless Steel						
Yale	Cal-Royal	Dorma	Falcon	Hager	PDQ	Stanley Commercial
2100	9800	NA	4700	4200	GP/SA	QED100

Fax 877-888-2772, email flashship@assaabloy.com or use Online Order Entry at www.assaabloydss.com/extranet by clicking the FLASHship™ icon
Note: FLASHship™ reserves the right to limit quantities.

Copyright © 2015, Yale Security Inc., an ASSA ABLOY Group company. All rights reserved. Reproduction in whole or in part without the express written permission of Yale Security Inc. is prohibited.

**Augusta - AUR**

Design	Model #	Finish	Hand	Strike	Cylinder	FLASHship™ West #	Approx. Wt. Each (Lbs)
8801FL - Passage or Closet Latch							
AUR	8801FL	626	RH	2815	—	285015	6
8802FL - Privacy, Bedroom or Bath Lock							
AUR	8802FL	626	RH	2815	—	285017	6
8805FL - Storeroom or Closet Lock							
AUR	8805FL	626	RH	2815	Less Cylinder	285019	6
8807FL - Entry Lock							
AUR	8807FL	626	RH	2815	Less Cylinder	285021	6
8808FL - Classroom Lock							
AUR	8808FL	626	RH	2815	Less Cylinder	285023	6
8822FL - Dormitory or Exit Lock							
AUR	8822FL	626	RH	2815	Less Cylinder	285025	7
8847FL - Apartment Corridor Door Lock							
AUR	8847FL	626	RH	2815	Less Cylinder	285027	7

Note: FLASHship™ reserves the right to limit quantities.

Fax 877-888-2772, email flashship@assaabloy.com or use
Online Order Entry at www.assaabloydss.com/extranet by clicking the FLASHship™ icon
Note: FLASHship™ reserves the right to limit quantities.

Copyright © 2015, Yale Security Inc., an ASSA ABLOY Group company. All rights reserved. Reproduction
in whole or in part without the express written permission of Yale Security Inc. is prohibited.

An ASSA ABLOY Group brand

ASSA ABLOY



Augusta - AU x CN

Design	Model #	Finish	Hand	Strike	Cylinder	FLASHship™ West #	Approx. Wt. Each (Lbs)
8801FL - Passage or Closet Latch							
AUCN	8801FL	626	RH	2815	—	285330	6.5
8802FL - Privacy, Bedroom or Bath Lock							
AUCN	8802FL	626	RH	2815	—	285331	7.5
8805FL - Storeroom or Closet Lock							
AUCN	8805FL	626	RH	2815	Less Cylinder	285332	7.5
8807FL - Entry Lock							
AUCN	8807FL	626	RH	2815	Less Cylinder	285333	7.5
8808FL - Classroom Lock							
AUCN	8808FL	626	RH	2815	Less Cylinder	285334	7.5
8822FL - Dormitory or Exit Lock							
AUCN	8822FL	626	RH	2815	Less Cylinder	285335	7.5
8847FL - Apartment Corridor Door Lock							
AUCN	8847FL	626	RH	2815	Less Cylinder	285336	7.5

Mortise Cylinders and Keyblanks

Model #	Description	Key Section	Finish	Collar Size Included	FLASHship™ West #	Approx. Wt. Each (Lbs)
Mortise Cylinders						
2153 x 1-1/8"	6-Pin, Keyed Random	PARA	626	1765.250	285000	0.4
2553 x 1-1/8"	6-Pin, Schlage® Keyed Random	C	626	1765.250	285001	0.4
Mortise Cylinders (LFIC)						
2196 x 1-1/2"	LFIC, 6-Pin, 0-Bitted	GA	626	1765.656	222002	1
2196 x 1-1/2"	LFIC, 6-Pin, 0-Bitted	PARA	626	1765.656	222003	1
Mortise Housings						
K660 x 1-3/8"	SFIC Housing Only, Less Core	—	626	1765.563	285002	0.4
2221 x 1-1/2"	LFIC Housing Only, Less Core	—	626	1765.656	222004	0.4
Interchangeable Cores (Large Format)						
1210	Core Only, 6-Pin, 0-Bitted	GA	626	—	201783	0.3
1210	Core Only, 6-Pin, 0-Bitted	PARA	626	—	201791	0.3
Miscellaneous						
—	Cylinder Ring	—	626	1765.156	222071	0.1
—	Cylinder Ring	—	626	1765.219	222072	0.1
—	Cylinder Ring	—	626	1765.250	201611	0.1
—	Cylinder Ring	—	626	1765.656	201610	0.1
—	Cylinder Ring	—	626	KP4	201612	0.1

Model #	Description	Key Section	FLASHship™ West #	Approx. Wt. Each (Lbs)
Keyblanks				
RN11	6-Pin Blank	PARA	285006	0.1
RN11	6-Pin Blank	GA	202817	0.1

Note: FLASHship™ reserves the right to limit quantities.

Fax 877-888-2772, email flashship@assaabloy.com or use Online Order Entry at www.assaabloydss.com/extranet by clicking the FLASHship™ icon

Note: FLASHship™ reserves the right to limit quantities.

Copyright © 2015, Yale Security Inc., an ASSA ABLOY Group company. All rights reserved. Reproduction in whole or in part without the express written permission of Yale Security Inc. is prohibited.



Augusta - AU



Pacific Beach - PB

Model #	Description	Key Section	Finish	Collar Size Included	FLASHship™ West #	Approx. Wt. Each (Lbs)
5401LN - Passage or Closet Latch						
AU	5401LN	626	497 ANSI	—	201987	4
5402LN - Privacy, Bedroom or Bath Lock						
AU	5402LN	626	497 ANSI	—	201989	4
5405LN - Storeroom or Closet Lock						
AU	5405LN	626	497 ANSI	1802, 6-Pin, PARA Keyed Random	214055	5
AU	5405LN	626	497 ANSI	2802, 6-Pin, Schlage® C Keyed Random	214150	5
5405LN - Storeroom or Closet Lock (Small Format Interchangeable Core)						
BAU	5405LN	626	497 ANSI	Less Core	201980	5
5407LN - Entry Lock						
AU	5407LN	626	497 ANSI	1802, 6-Pin, PARA Keyed Random	214056	5
AU	5407LN	626	497 ANSI	2802, 6-Pin, Schlage® C Keyed Random	214151	5
5407LN - Entry Lock (Small Format Interchangeable Core)						
BAU	5407LN	626	497 ANSI	Less Core	201981	5
5408LN - Classroom Lock						
AU	5408LN	626	497 ANSI	1802, 6-Pin, PARA Keyed Random	214057	5
AU	5408LN	626	497 ANSI	2802, 6-Pin, Schlage® C Keyed Random	214152	5
5408LN - Classroom Lock (Small Format Interechangeable Core)						
BAU	5408LN	626	497 ANSI	Less Core	201982	5

Fax 877-888-2772, email flashship@assaabloy.com or use
 Online Order Entry at www.assaabloydss.com/extranet by clicking the FLASHship™ icon
 Note: FLASHship™ reserves the right to limit quantities.

Copyright © 2015, Yale Security Inc., an ASSA ABLOY Group company. All rights reserved. Reproduction in whole or in part without the express written permission of Yale Security Inc. is prohibited.

An ASSA ABLOY Group brand

ASSA ABLOY

4700LN Series Grade 1 Cylindrical Locks 2-3/4" Backset



Augusta - AU



Monroe - MO



Pacific Beach - PB

Design	Model #	Finish	Strike	Cylinder	FLASHship™ West #	Approx. Wt. Each (Lbs)
4701LN - Passage or Closet Latch						
AU	4701LN	613E	497 ANSI	—	285370	4
AU	4701LN	626	497 ANSI	—	285045	4
MO	4701LN	626	497 ANSI	—	285239	4
PB	4701LN	613E	497 ANSI	—	285371	4
PB	4701LN	626	497 ANSI	—	285046	4
4702LN - Privacy, Bedroom or Bath Lock						
AU	4702LN	613E	497 ANSI	—	285373	4
AU	4702LN	626	497 ANSI	—	285047	4
MO	4702LN	626	497 ANSI	—	285240	4
PB	4702LN	613E	497 ANSI	—	285374	4
PB	4702LN	626	497 ANSI	—	285048	4
4705LN - Storeroom or Closet Lock						
AU	4705LN	613E	497 ANSI	1804, 6-Pin, PARA Keyed Random	285376	5
AU	4705LN	613E	497 ANSI	2804, 6-Pin, Schlage® C Keyed Random	285377	5
AU	4705LN	626	497 ANSI	1804, 6-Pin, PARA Keyed Random	285049	5
AU	4705LN	626	497 ANSI	2804, 6-Pin, Schlage® C Keyed Random	285050	5
MO	4705LN	626	497 ANSI	1804, 6-Pin, PARA Keyed Random	285241	5
MO	4705LN	626	497 ANSI	2804, 6-Pin, Schlage® C Keyed Random	285242	5
PB	4705LN	613E	497 ANSI	1804, 6-Pin, PARA Keyed Random	285378	5
PB	4705LN	613E	497 ANSI	2804, 6-Pin, Schlage® C Keyed Random	285379	5
PB	4705LN	626	497 ANSI	1804, 6-Pin, PARA Keyed Random	285051	5
PB	4705LN	626	497 ANSI	2804, 6-Pin, Schlage® C Keyed Random	285052	5
4705LN - Storeroom or Closet Lock (Small Format Interchangeable Core)						
BAU	4705LN	626	497 ANSI	Less Core	285053	5
4707LN - Entry Lock						
AU	4707LN	613E	497 ANSI	1804, 6-Pin, PARA Keyed Random	285383	5
AU	4707LN	613E	497 ANSI	2804, 6-Pin, Schlage® C Keyed Random	285384	5
AU	4707LN	626	497 ANSI	1804, 6-Pin, PARA Keyed Random	285054	5
AU	4707LN	626	497 ANSI	2804, 6-Pin, Schlage® C Keyed Random	285055	5
MO	4707LN	626	497 ANSI	1804, 6-Pin, PARA Keyed Random	285243	5
MO	4707LN	626	497 ANSI	2804, 6-Pin, Schlage® C Keyed Random	285244	5
PB	4707LN	613E	497 ANSI	1804, 6-Pin, PARA Keyed Random	285385	5
PB	4707LN	613E	497 ANSI	2804, 6-Pin, Schlage® C Keyed Random	285386	5
PB	4707LN	626	497 ANSI	1804, 6-Pin, PARA Keyed Random	285056	5
PB	4707LN	626	497 ANSI	2804, 6-Pin, Schlage® C Keyed Random	285057	5

Fax 877-888-2772, email flashship@assaabloy.com or use Online Order Entry at www.assaabloydss.com/extranet by clicking the FLASHship™ icon

Note: FLASHship™ reserves the right to limit quantities.

Copyright © 2015, Yale Security Inc., an ASSA ABLOY Group company. All rights reserved. Reproduction in whole or in part without the express written permission of Yale Security Inc. is prohibited.



Augusta - AU



Monroe - MO



Pacific Beach - PB

Design	Model #	Finish	Strike	Cylinder	FLASHship™ West #	Approx. Wt. Each (Lbs)
4707LN - Entry Lock (Small Format Interchangeable Core)						
BAU	4707LN	626	497 ANSI	Less Core	285058	5
BAU	4707LN	613E	497 ANSI	Less Core	285388	5
4708LN - Classroom Lock						
AU	4708LN	613E	497 ANSI	1804, 6-Pin, PARA Keyed Random	285389	5
AU	4708LN	613E	497 ANSI	2804, 6-Pin, Schlage® C Keyed Random	285390	5
AU	4708LN	626	497 ANSI	1804, 6-Pin, PARA Keyed Random	285059	5
AU	4708LN	626	497 ANSI	2804, 6-Pin, Schlage® C Keyed Random	285060	5
MO	4708LN	626	497 ANSI	1804, 6-Pin, PARA Keyed Random	285245	5
MO	4708LN	626	497 ANSI	2804, 6-Pin, Schlage® C Keyed Random	285246	5
PB	4708LN	613E	497 ANSI	1804, 6-Pin, PARA Keyed Random	285391	5
PB	4708LN	613E	497 ANSI	2804, 6-Pin, Schlage® C Keyed Random	285392	5
PB	4708LN	626	497 ANSI	1804, 6-Pin, PARA Keyed Random	285061	5
PB	4708LN	626	497 ANSI	2804, 6-Pin, Schlage® C Keyed Random	285062	5
4708LN - Classroom Lock (Small Format Interchangeable Core)						
BAU	4708LN	626	497 ANSI	Less Core	285063	5
BAU	4708LN	613E	497 ANSI	Less Core	285395	5

Note: FLASHship™ reserves the right to limit quantities.

Fax 877-888-2772, email flashship@assaabloy.com or use
Online Order Entry at www.assaabloydss.com/extranet by clicking the FLASHship™ icon

Note: FLASHship™ reserves the right to limit quantities.

Copyright © 2015, Yale Security Inc., an ASSA ABLOY Group company. All rights reserved. Reproduction in whole or in part without the express written permission of Yale Security Inc. is prohibited.

An ASSA ABLOY Group brand

ASSA ABLOY

**Augusta - AU**

Design	Model #	Finish	Strike	Cylinder	FLASHship™ West #	Approx. Wt. Each (Lbs)
5301LN - Passage or Closet Latch						
AU	5301LN	626	497 ANSI	—	201390	4
5302LN - Privacy, Bedroom or Bath Lock						
AU	5302LN	626	497 ANSI	—	201391	4
5305LN - STOREROOM OR CLOSET LOCK						
AU	5305LN	626	497 ANSI	Less Cylinder	201392	4
AU	5305LN	626	497 ANSI	1802, 6-Pin, PARA Keyed Random	202233	5
AU	5305LN	626	497 ANSI	1802, 6-Pin, PARA 0-Bitted	211756	5
AU	5305LN	626	497 ANSI	2802, 6-Pin, Schlage® C Keyed Random	210303	5
AU	5305LN	626	497 ANSI	2802, 6-Pin, Schlage® C 0-Bitted	210127	5
5307LN - Entry Lock						
AU	5307LN	626	497 ANSI	Less Cylinder	201393	5
AU	5307LN	626	497 ANSI	1802, 6-Pin, PARA Keyed Random	202234	5
AU	5307LN	626	497 ANSI	1802, 6-Pin, PARA 0-Bitted	211757	5
AU	5307LN	626	497 ANSI	2802, 6-Pin, Schlage® C Keyed Random	210304	5
AU	5307LN	626	497 ANSI	2802, 6-Pin, Schlage® C 0-Bitted	210128	5

Fax 877-888-2772, email flashship@assaabloy.com or use
Online Order Entry at www.assaabloydss.com/extranet by clicking the FLASHship™ icon

Note: FLASHship™ reserves the right to limit quantities.

Copyright © 2015, Yale Security Inc., an ASSA ABLOY Group company. All rights reserved. Reproduction
in whole or in part without the express written permission of Yale Security Inc. is prohibited.



Augusta - AU



Monroe - MO



Pacific Beach - PB

Design	Model #	Finish	Strike	Cylinder	FLASHship™ West #	Approx. Wt. Each (Lbs)
4601LN - Passage or Closet Latch						
AU	4601LN	613E	497 ANSI	—	285307	4
AU	4601LN	626	497 ANSI	—	285089	4
MO	4601LN	626	497 ANSI	—	285247	4
PB	4601LN	613E	497 ANSI	—	285308	4
PB	4601LN	626	497 ANSI	—	285090	4
4602LN - Privacy, Bedroom or Bath Lock						
AU	4602LN	613E	497 ANSI	—	285309	4
AU	4602LN	626	497 ANSI	—	285091	4
MO	4602LN	626	497 ANSI	—	285248	4
PB	4602LN	613E	497 ANSI	—	285310	4
PB	4602LN	626	497 ANSI	—	285092	4
4605LN - Storeroom or Closet Lock						
AU	4605LN	613E	497 ANSI	1806, 6-Pin, PARA Keyed Random	285311	5
AU	4605LN	613E	497 ANSI	2806, 6-Pin, Schlage® C Keyed Random	285312	5
AU	4605LN	626	497 ANSI	1806, 6-Pin, PARA Keyed Random	285093	5
AU	4605LN	626	497 ANSI	2806, 6-Pin, Schlage® C Keyed Random	285094	5
MO	4605LN	626	497 ANSI	1806, 6-Pin, PARA Keyed Random	285249	5
MO	4605LN	626	497 ANSI	2806, 6-Pin, Schlage® C Keyed Random	285250	5
PB	4605LN	613E	497 ANSI	1806, 6-Pin, PARA Keyed Random	285313	5
PB	4605LN	613E	497 ANSI	2806, 6-Pin, Schlage® C Keyed Random	285314	5
PB	4605LN	626	497 ANSI	1806, 6-Pin, PARA Keyed Random	285095	5
PB	4605LN	626	497 ANSI	2806, 6-Pin, Schlage® C Keyed Random	285096	5
4605LN - Storeroom or Closet Lock (Small Format Interchangeable Core)						
BAU	4605LN	626	497 ANSI	Less Core	285097	5
4607LN - Entry Lock						
AU	4607LN	613E	497 ANSI	1806, 6-Pin, PARA Keyed Random	285316	5
AU	4607LN	613E	497 ANSI	2806, 6-Pin, Schlage® C Keyed Random	285317	5
AU	4607LN	626	497 ANSI	1806, 6-Pin, PARA Keyed Random	285098	5
AU	4607LN	626	497 ANSI	2806, 6-Pin, Schlage® C Keyed Random	285099	5
MO	4607LN	626	497 ANSI	1806, 6-Pin, PARA Keyed Random	285251	5
MO	4607LN	626	497 ANSI	2806, 6-Pin, Schlage® C Keyed Random	285252	5
PB	4607LN	613E	497 ANSI	1806, 6-Pin, PARA Keyed Random	285318	5
PB	4607LN	613E	497 ANSI	2806, 6-Pin, Schlage® C Keyed Random	285319	5
PB	4607LN	626	497 ANSI	1806, 6-Pin, PARA Keyed Random	285100	5
PB	4607LN	626	497 ANSI	2806, 6-Pin, Schlage® C Keyed Random	285101	5
4607LN - Entry Lock (Small Format Interchangeable Core)						
BAU	4607LN	626	497 ANSI	Less Core	285102	5

Fax 877-888-2772, email flashship@assaabloy.com or use
Online Order Entry at www.assaabloydss.com/extranet by clicking the FLASHship™ icon

Note: FLASHship™ reserves the right to limit quantities.

Copyright © 2015, Yale Security Inc., an ASSA ABLOY Group company. All rights reserved. Reproduction in whole or in part without the express written permission of Yale Security Inc. is prohibited.

An ASSA ABLOY Group brand

ASSA ABLOY

4600LN Series Grade 2 Cylindrical Locks 2-3/4" Backset



Augusta - AU



Monroe - MO



Pacific Beach - PB

Design	Model #	Finish	Strike	Cylinder	FLASHship™ West #	Approx. Wt. Each (Lbs)
4608LN - Classroom Lock						
AU	4608LN	613E	497 ANSI	1806, 6-Pin, PARA Keyed Random	285321	5
AU	4608LN	613E	497 ANSI	2806, 6-Pin, Schlage® C Keyed Random	285322	5
AU	4608LN	626	497 ANSI	1806, 6-Pin, PARA Keyed Random	285103	5
AU	4608LN	626	497 ANSI	2806, 6-Pin, Schlage® C Keyed Random	285104	5
MO	4608LN	626	497 ANSI	1806, 6-Pin, PARA Keyed Random	285253	5
MO	4608LN	626	497 ANSI	2806, 6-Pin, Schlage® C Keyed Random	285254	5
PB	4608LN	613E	497 ANSI	1806, 6-Pin, PARA Keyed Random	285323	5
PB	4608LN	613E	497 ANSI	2806, 6-Pin, Schlage® C Keyed Random	285324	5
PB	4608LN	626	497 ANSI	1806, 6-Pin, PARA Keyed Random	285105	5
PB	4608LN	626	497 ANSI	2806, 6-Pin, Schlage® C Keyed Random	285106	5
4608LN - Classroom Lock (Small Format Interchangeable Core)						
BAU	4608LN	626	497 ANSI	Less Core	285107	5
4628LN - Communicating Passage Lock						
AU	4628LN	613E	497 ANSI	—	285326	5
AU	4628LN	626	497 ANSI	—	285 108	5
MO	4628LN	626	497 ANSI	—	285255	5
PB	4628LN	613E	497 ANSI	—	285327	5
PB	4628LN	626	497 ANSI	—	285109	5
4655LN - Dummy Trim						
AU	4655LN	613E	—	—	285328	2
AU	4655LN	626	—	—	285110	2
MO	4655LN	626	—	—	285256	2
PB	4655LN	613E	—	—	285329	2
PB	4655LN	626	—	—	285111	2

Note: FLASHship™ reserves the right to limit quantities.

Fax 877-888-2772, email flashship@assaabloy.com or use
Online Order Entry at www.assaabloydss.com/extranet by clicking the FLASHship™ icon

Note: FLASHship™ reserves the right to limit quantities.

Copyright © 2015, Yale Security Inc., an ASSA ABLOY Group company. All rights reserved. Reproduction
in whole or in part without the express written permission of Yale Security Inc. is prohibited.

An ASSA ABLOY Group brand

ASSA ABLOY



Model #	Description	Key Section	Finish	FLASHship™ West #	Approx. Wt. Each (Lbs)
4600(LN) Grade 2 Latchbolts					
MCP238	Plain, 2-3/8" Backset, 1" Square Front	—	626	286037	0.2
MCP238	Plain, 2-3/8" Backset, 1" Square Front	—	613	286039	0.2
MCD238	Deadlocking, 2-3/8" Backset, 1" Square Front	—	626	286038	0.2
MCD238	Deadlocking, 2-3/8" Backset, 1" Square Front	—	613	286040	0.2

Model #	Description	Finish	FLASHship™ West #	Approx. Wt. Each (Lbs)
Strikes				
371	T-Strike, 1-1/4" Lip	626	286043	0.1
371	T-Strike, 1-1/4" Lip	613	286046	0.1
70S	Full Lip, Square Corner	626	286041	0.1
70S	Full Lip, Square Corner	613	286044	0.1
71S	Full Lip, Round Corner	626	286042	0.1
71S	Full Lip, Round Corner	613	286045	0.1

Note: FLASHship™ reserves the right to limit quantities.

Fax 877-888-2772, email flashship@assaabloy.com or use
Online Order Entry at www.assaabloydss.com/extranet by clicking the FLASHship™ icon

Note: FLASHship™ reserves the right to limit quantities.

Copyright © 2015, Yale Security Inc., an ASSA ABLOY Group company. All rights reserved. Reproduction in whole or in part without the express written permission of Yale Security Inc. is prohibited.

An ASSA ABLOY Group brand

ASSA ABLOY

D Series Grade 1 & 2 Cylindrical Deadbolts



D212 Deadbolt

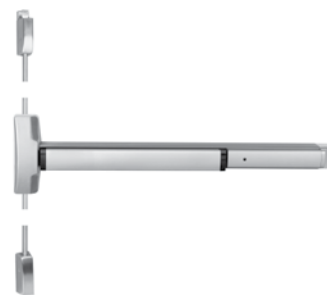
Model #	Finish	Strike	Cylinder	FLASHship™ West #	Approx. Wt. Each (Lbs)
Cylinder x Thumbturn					
D112	613E	D243	1807, 6-Pin, PARA Keyed Random	286048	2
D112	613E	D243	2807, 6-Pin, Schlage® C Keyed Random	286050	2
D112	626	D243	1807, 6-Pin, PARA Keyed Random	286047	2
D112	626	D243	2807, 6-Pin, Schlage® C Keyed Random	286049	2
D212	613E	D243	1807, 6-Pin, PARA Keyed Random	285337	2
D212	613E	D243	2807, 6-Pin, Schlage® C Keyed Random	285338	2
D212	626	D243	1807, 6-Pin, PARA Keyed Random	285133	2
D212	626	D243	2807, 6-Pin, Schlage® C Keyed Random	285134	2
Cylinder x Thumbturn (Small Format Interchangeable Core)					
B-D112	613E	D243	Less Core	286052	2
B-D112	626	D243	Less Core	286051	2
B-D212	613E	D243	Less Core	285339	2
B-D212	626	D243	Less Core	285135	2
Cylinder x Cylinder					
D122	613E	D243	1808, 6-Pin, PARA Keyed Random	286054	2
D122	613E	D243	2808, 6-Pin, Schlage® C Keyed Random	286056	2
D122	626	D243	1808, 6-Pin, PARA Keyed Random	286053	2
D122	626	D243	2808, 6-Pin, Schlage® C Keyed Random	286055	2
D222	613E	D243	1808, 6-Pin, PARA Keyed Random	285340	2
D222	613E	D243	2808, 6-Pin, Schlage® C Keyed Random	285341	2
D222	626	D243	1808, 6-Pin, PARA Keyed Random	285136	2
D222	626	D243	2808, 6-Pin, Schlage® C Keyed Random	285137	2
Cylinder x Cylinder (Small Format Interchangeable Core)					
B-D122	613E	D243	Less Core	286058	2
B-D122	626	D243	Less Core	286057	2
B-D222	613E	D243	Less Core	285342	2
B-D222	626	D243	Less Core	285138	2
Cylinder x Classroom					
D162	613E	D243	1807, 6-Pin, PARA Keyed Random	286060	2
D162	613E	D243	2807, 6-Pin, Schlage® C Keyed Random	286062	2
D162	626	D243	1807, 6-Pin, PARA Keyed Random	286059	2
D162	626	D243	2807, 6-Pin, Schlage® C Keyed Random	286061	2
D262	613E	D243	1807, 6-Pin, PARA Keyed Random	286066	2
D262	613E	D243	2807, 6-Pin, Schlage® C Keyed Random	286068	2
D262	626	D243	1807, 6-Pin, PARA Keyed Random	286065	2
D262	626	D243	2807, 6-Pin, Schlage® C Keyed Random	286067	2
Cylinder x Classroom (Small Format Interchangeable Core)					
B-D162	613E	D243	Less Core	286064	2
B-D162	626	D243	Less Core	286063	2
B-D262	613E	D243	Less Core	286070	2
B-D262	626	D243	Less Core	286069	2
Blank Plate x Thumbturn					
D242	613E	D243	—	285343	2
D242	626	D243	—	285139	2
Occupancy Indicator x Thumbturn					
D292	613E	D243	—	285419	2
D292	626	D243	—	285418	2
Model #	Finish	Backset	Throw	FLASHship™ West #	Approx. Wt. Each (Lbs)
Deadbolt Assemblies					
D38	613	2-3/8"	1"	286072	1
D38	626	2-3/8"	1"	286071	1

Note: FLASHship™ reserves the right to limit quantities.

Fax 877-888-2772, email flashship@assaabloy.com or use
Online Order Entry at www.assaabloydss.com/extranet by clicking the FLASHship™ icon

Note: FLASHship™ reserves the right to limit quantities.

Copyright © 2015, Yale Security Inc., an ASSA ABLOY Group company. All rights reserved. Reproduction
in whole or in part without the express written permission of Yale Security Inc. is prohibited.

**7110 Surface Vertical Rod****6000 Rim****6110 Surface Vertical Rod**

Model #	Description	Finish	Hand	Strike	FLASHship™ West #	Approx. Wt. Each (Lbs)
7100 - Rim						
7100-36	Rim Exit Device, 36"	630	—	757F	203884	14
7100F-36	3 Hour Fire Rated Rim Exit Device, 36"	630	—	757F	203885	14
7110 - Surface Vertical Rod						
7110-36	SVR Exit Device, 36"	630	RHR	791 Top, 790 Bottom	203886	18
7110-36	SVR Exit Device, 36"	630	LHR	791 Top, 790 Bottom	203963	18
7110F-36	3 Hour Fire Rated SVR Exit Device, 36"	630	RHR	791 Top, 790 Bottom	203964	18
7110F-36	3 Hour Fire Rated SVR Exit Device, 36"	630	LHR	791 Top, 790 Bottom	203965	18
7170 - Surface Vertical Rod - LBR						
7170F90LBR	90 Minute Fire Rated SVR Exit Device, Less Bottom Rod, 36"	630	—	726	203534	22
6100 - Rim						
6100-36	Rim Exit Device, 36"	630	—	757F	286111	11
6100-48	Rim Exit Device, 48"	630	—	757F	286112	11
6100F-36	3 Hour Fire Rated Rim Exit Device, 36"	630	—	757F	286113	11
6100F-48	3 Hour Fire Rated Rim Exit Device, 48"	689	—	757F	286114	11
6110 - Surface Vertical Rod						
6170-36	SVR Exit Device, 36"	630	RHR	791 Top, 790 Bottom	286115	15
6170F-36	SVR Exit Device, 36"	630	RHR	791 Top, 790 Bottom	286117	15
6170F-LBR-36	3 Hour Fire Rated Rim Exit Device, 36" - Less Bottom Rod	630	RHR	791 Top, 790 Bottom	286119	15

Note: FLASHship™ reserves the right to limit quantities.

Fax 877-888-2772, email flashship@assaabloy.com or use
Online Order Entry at www.assaabloydss.com/extranet by clicking the FLASHship™ icon

Note: FLASHship™ reserves the right to limit quantities.

Copyright © 2015, Yale Security Inc., an ASSA ABLOY Group company. All rights reserved. Reproduction
in whole or in part without the express written permission of Yale Security Inc. is prohibited.

An ASSA ABLOY Group brand

ASSA ABLOY



2100 Rim



2110 Surface Vertical Rod

Model #	Description	Finish	Hand*	Strike	FLASHship™ West #	Approx. Wt. Each (Lbs)
2100 - Rim						
2100-36	Rim Exit Device, 36"	630	—	757F	285148	11
2100-36	Rim Exit Device, 36"	689	—	757F	286021	11
2100-48	Rim Exit Device, 48"	630	—	757F	285149	11
2100-48	Rim Exit Device, 48"	689	—	757F	286025	11
2100F-36	3 Hour Fire Rated Rim Exit Device, 36"	630	—	757F	285150	11
2100F-36	3 Hour Fire Rated Rim Exit Device, 36"	689	—	757F	286022	11
2100F-48	3 Hour Fire Rated Rim Exit Device, 48"	630	—	757F	285151	11
2100F-48	3 Hour Fire Rated Rim Exit Device, 48"	689	—	757F	286026	11
2110 - Surface Vertical Rod						
2110-36	SVR Exit Device, 36"	630	RHR	791 Top, 790 Bottom	285152	15
2110-36	SVR Exit Device, 36"	689	RHR	791 Top, 790 Bottom	286023	15
2110-48	SVR Exit Device, 48"	630	RHR	791 Top, 790 Bottom	217388	15
2110F-36	3 Hour Fire Rated SVR Exit Device, 36"	630	RHR	791 Top, 790 Bottom	285154	15
2110F-36	3 Hour Fire Rated SVR Exit Device, 36"	689	RHR	791 Top, 790 Bottom	286024	15
2110F-48	3 Hour Fire Rated SVR Exit Device, 48"	630	RHR	791 Top, 790 Bottom	217525	15

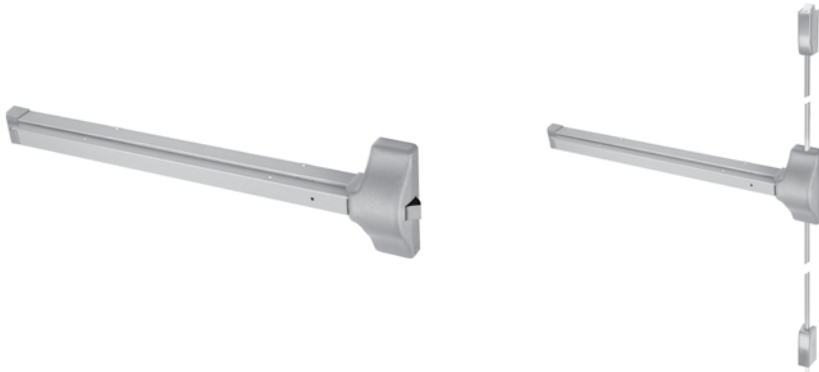
Note: FLASHship™ reserves the right to limit quantities.

*Units are field reversible

Fax 877-888-2772, email flashship@assaabloy.com or use
Online Order Entry at www.assaabloydss.com/extranet by clicking the FLASHship™ icon

Note: FLASHship™ reserves the right to limit quantities.

Copyright © 2015, Yale Security Inc., an ASSA ABLOY Group company. All rights reserved. Reproduction
in whole or in part without the express written permission of Yale Security Inc. is prohibited.

**1800 Rim****1810 Surface Vertical Rod**

Model #	Description	Finish	Hand*	Strike	FLASHship™ West #	Approx. Wt. Each (Lbs)
1800 - Rim						
1800-36	Rim Exit Device, 36"	689	—	757F	285163	11
1800-48	Rim Exit Device, 48"	689	—	757F	285164	12
1800F-36	3 Hour Fire Rated Rim Exit Device, 36"	689	—	757F	285165	11
1800F-48	3 Hour Fire Rated Rim Exit Device, 48"	689	—	757F	285166	12
1810 - Surface Vertical Rod						
1810-36	SVR Exit Device, 36"	689	RHR	791 Top, 790 Bottom	285167	15
1810-48	SVR Exit Device, 48"	689	RHR	791 Top, 790 Bottom	217373	16
1810F-36	3 Hour Fire Rated SVR Exit Device, 36"	689	RHR	791 Top, 790 Bottom	285169	15
1810F-48	3 Hour Fire Rated SVR Exit Device, 48"	689	RHR	791 Top, 790 Bottom	217379	16

Note: FLASHship™ reserves the right to limit quantities.

*Units are field reversible

Fax 877-888-2772, email flashship@assaabloy.com or use
Online Order Entry at www.assaabloydss.com/extranet by clicking the FLASHship™ icon

Note: FLASHship™ reserves the right to limit quantities.

Copyright © 2015, Yale Security Inc., an ASSA ABLOY Group company. All rights reserved. Reproduction in whole or in part without the express written permission of Yale Security Inc. is prohibited.

An ASSA ABLOY Group brand

ASSA ABLOY

**217F Plate Trim**

Model #	Finish	Cylinder	FLASHship™ West #	Approx. Wt. Each (Lbs)
Dummy Trim Pull Plate				
214F	689	—	285178	1
Nightlatch Cylinder x Pull				
217F	689	Less Cylinder	285179	1

Note: See page 37 for cylinder options

440F Series: Rose Trim**Augusta - AU****Pacific Beach - PB**

Design	Model #	Finish	Cylinder	FLASHship™ West #	Approx. Wt. Each (Lbs)
Nightlatch Access by Key					
AU	441F	626	1802, 6-Pin, PARA Keyed Random	286019	2.5
AU	441F	626	2802, 6-Pin, Schlage® C Keyed Random	286020	2.5
AU	441F	689	1802, 6-Pin, PARA Keyed Random	286015	2.5
AU	441F	689	2802, 6-Pin, Schlage® C Keyed Random	286016	2.5
PB	441F	626	1802, 6-Pin, PARA Keyed Random	217395	2.5
PB	441F	626	2802, 6-Pin, Schlage® C Keyed Random	217407	2.5
Nightlatch Access by Key (Small Format Interchangeable Core)					
BAU	441F	626	Less Core	217773	2.5
BPB	441F	626	Less Core	217776	2.5
Classroom					
AU	446F	626	1802, 6-Pin, PARA Keyed Random	285180	2.5
AU	446F	626	2802, 6-Pin, Schlage® C Keyed Random	285181	2.5
AU	446F	689	1802, 6-Pin, PARA Keyed Random	286017	2.5
AU	446F	689	2802, 6-Pin, Schlage® C Keyed Random	286018	2.5
PB	446F	626	1802, 6-Pin, PARA Keyed Random	285182	2.5
PB	446F	626	2802, 6-Pin, Schlage® C Keyed Random	285183	2.5
Classroom (Small Format Interchangeable Core)					
BAU	446F	626	Less Core	285184	2.5
BPB	446F	626	Less Core	217777	2.5
Dummy Free-Wheeling Lever					
AU	448F	626	—	285185	2.5
PB	448F	626	—	285186	2.5

Fax 877-888-2772, email flashship@assaabloy.com or use Online Order Entry at www.assaabloydss.com/extranet by clicking the FLASHship™ icon

Note: FLASHship™ reserves the right to limit quantities.

Copyright © 2015, Yale Security Inc., an ASSA ABLOY Group company. All rights reserved. Reproduction in whole or in part without the express written permission of Yale Security Inc. is prohibited.



426F Escutcheon Trim

Design	Model #	Finish	Hand*	Cylinder	FLASHship™ West #	Approx. Wt. Each (Lbs)
Exit Only/Blank Plate						
—	420F	630	—	—	221792	2
—	420F	689	—	—	217423	2
Classroom/Storeroom						
AU	426F	630	RHR	Less Cylinder	285187	2.7
AU	426F	689	RHR	Less Cylinder	217513	2.7
PB	426F	630	RHR	Less Cylinder	285188	2.7
PB	426F	689	RHR	Less Cylinder	217515	2.7
Passage/Dummy						
AU	428F	630	RHR	—	285189	2.7
AU	428F	689	RHR	—	217425	2.7
PB	428F	630	RHR	—	285190	2.7
PB	428F	689	RHR	—	217429	2.7

Note: See page 28 for cylinder options

*Units are field reversible

FLASHship™ reserves the right to limit quantities.

The following chart indicates the cylinder finishes used with trims

Trim Finish	Cylinder Finish
630	626
689	626

620F Series: Escutcheon Trim



620F Escutcheon Trim

Design	Model #	Finish	Hand*	FLASHship™ West #	Approx. Wt. Each (Lbs)
Exit Only/Blank Plate					
—	620F	630	—	221696	2
Classroom/Storeroom					
AU	626F	630	RHR	201328	5
PB	626F	630	RHR	201374	5
Passage/Dummy					
AU	628F	630	RHR	201372	5
PB	628F	630	RHR	201376	5

*Units field reversible

Fax 877-888-2772, email flashship@assaabloy.com or use

Online Order Entry at www.assaabloydss.com/extranet by clicking the FLASHship™ icon

Note: FLASHship™ reserves the right to limit quantities.

Copyright © 2015, Yale Security Inc., an ASSA ABLOY Group company. All rights reserved. Reproduction in whole or in part without the express written permission of Yale Security Inc. is prohibited.

An ASSA ABLOY Group brand

ASSA ABLOY



630F Series: Escutcheon Trim

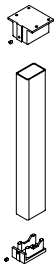


630F Escutcheon Trim

Model #	Finish	cylinder	FLASHship™ West #	Approx. Wt. Each (Lbs)
Nightlatch x Pull				
632F	630	Less Cylinder	202403	5
Dummy				
634F	630	—	202411	5

Note: See page 28 for cylinder options
FLASHship™ reserves the right to limit quantities.

M200 Series: Removable Mullions



Model #	Description	FLASHship™ West #	Approx. Wt. Each (Lbs)
For 8 Ft. Openings			
M200-8	Complete for Panic Exits	285202	37
M200F-8	Complete for Fire Exits	285203	37

Note: FLASHship™ reserves the right to limit quantities.

Fax 877-888-2772, email flashship@assaabloy.com or use
Online Order Entry at www.assaabloydss.com/extranet by clicking the FLASHship™ icon

Note: FLASHship™ reserves the right to limit quantities.

Copyright © 2015, Yale Security Inc., an ASSA ABLOY Group company. All rights reserved. Reproduction in whole or in part without the express written permission of Yale Security Inc. is prohibited.



Cylinders for Exit Device Trims

Model #	Description	Key Section	Finish	Collar Size Included	FLASHship™ West #	Approx. Wt. Each (Lbs)
Rim Cylinders						
1109	6-Pin, Keyed Random	PARA	626	1765.250	285003	0.4
1109	6-Pin, Keyed Random	PARA	613	1765.250	285344	0.4
2109	6-Pin, Schlage® Keyed Random	C	626	1765.250	285004	0.4
2109	6-Pin, Schlage® Keyed Random	C	613	1765.250	285345	0.4
Rim Cylinders (Interchangeable Core)						
1193 x 1-7/16"	LFIC, 6-Pin, 0-Bitted	GA	626	1765.250	222043	1
1193 x 1-7/16"	LFIC, 6-Pin, 0-Bitted	PARA	626	1765.250	222044	1
1193 x 1-7/16"	LFIC, 6-Pin, 0-Bitted	GA	626	1765.469	210141	1
1193 x 1-7/16"	LFIC, 6-Pin, 0-Bitted	PARA	626	1765.469	222047	1
1193 x 1-7/16"	LFIC, 6-Pin, 0-Bitted	GA	626	1765.656	222050	1
1193 x 1-7/16"	LFIC, 6-Pin, 0-Bitted	PARA	626	1765.656	222051	1
Rim Housings						
1212 x 1-7/16"	LFIC Housing Only, Less Core	—	626	1765.250	222053	0.5
1212 x 1-7/16"	LFIC Housing Only, Less Core	—	626	1765.469	201784	0.5
1212 x 1-7/16"	LFIC Housing Only, Less Core	—	626	1765.656	222056	0.5
K680 x 1-3/8"	SFIC Housing Only, Less Core	—	626	1765.187	222058	0.5
K680 x 1-3/8"	SFIC Housing Only, Less Core	—	626	1765.375	285005	0.5
K680 x 1-3/8"	SFIC Housing Only, Less Core	—	626	1765.406	222062	0.5
K680 x 1-3/8"	SFIC Housing Only, Less Core	—	626	1765.563	222192	0.5
K680 x 1-3/8"	SFIC Housing Only, Less Core	—	613	1765.375	285346	0.5
Mortise Cylinders for SDA 16						
2153 x 1-1/8"	6-Pin, Keyed Random	PARA	626	1765.312	222066	0.4
2553 x 1-1/8"	6-Pin, Schlage® Keyed Random	C	626	1765.312	222068	0.4
Interchangeable Cores (Large Format)						
1210	Core Only, 6-Pin, 0-Bitted	GA	—	626	201783	0.3
1210	Core Only, 6-Pin, 0-Bitted	PARA	—	626	201791	0.3

Fax 877-888-2772, email flashship@assaabloy.com or use
Online Order Entry at www.assaabloydss.com/extranet by clicking the FLASHship™ icon

Note: FLASHship™ reserves the right to limit quantities.

Copyright © 2015, Yale Security Inc., an ASSA ABLOY Group company. All rights reserved. Reproduction in whole or in part without the express written permission of Yale Security Inc. is prohibited.

An ASSA ABLOY Group brand

ASSA ABLOY



Miscellaneous Hardware for Exit Devices

Model #	Description	Finish	FLASHship™ West #	Approx. Wt. Each (Lbs)
Extension Rods - For All Exit Device Series				
2010-12	12" (305mm) Length	630	285204	1
2010-12	12" (305mm) Length	689	285205	1
Shim Kits for 7000 Series				
723	For Rim, SquareBolt®, CVR and Mortise Devices	693	203599	2
724	For SVR Devices	693	203601	3
Shim Kits for 2100 Series				
223	For 2100(F) rim	693	286027	1
224	For 2110(F) SVR	693	286028	1
Strikes				
790	Standard Floor Strike	693	203566	0.1
791	Standard Top Strike	693	203565	0.1
793	Optional Rim Strike for Double Door Applications without a Mullion	—	286029	1.5
Miscellaneous				
1109BPK	Backplate Kit for 1109 Rim Cylinders	626	202771	0.5
7000	Long Spindle (Tailpiece) Kit for All 620F & 630F Series Trim, 2" to 2-1/2" Thick Door	—	203955	0.1
ECK1	Flush End Cap Kit	630	221790	1
ECK7	Impact Resistant End Cap Kit	630	203612	1
60-7000-0815	Schlage® Cam and Housing Assembly	—	222432	0.5
Electrified Options*				
7116	Alarm Kit for 7000 Series Exit Devices	630	203541	2
SDA16-1	Stand-Alone Door Alarm, Less Cylinder	—	286030	1.5

Note: FLASHship™ reserves the right to limit quantities.

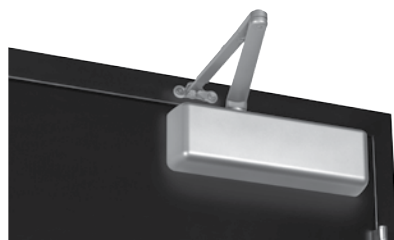
Fax 877-888-2772, email flashship@assaabloy.com or use Online Order Entry at www.assaabloydss.com/extranet by clicking the FLASHship™ icon

Note: FLASHship™ reserves the right to limit quantities.

Copyright © 2015, Yale Security Inc., an ASSA ABLOY Group company. All rights reserved. Reproduction in whole or in part without the express written permission of Yale Security Inc. is prohibited.



5800 Series: Cast Iron



5801 Non-Hold Open



5821T Hold Open

Model #	Description	Finish	FLASHship™ West #	Approx. Wt. Each (Lbs)
Non-Hold Open With Sleeve Nuts				
5801 x SN	Multi-Size 1-6	689	285230	12
5801 x SN	Multi-Size 1-6	690	285351	12
Non-Hold Open, With Sleeve Nuts				
5821 x SN	Stop Only, Multi-Size 1-6	689	285232	14
5821 x SN	Stop Only, Multi-Size 1-6	690	285352	14
Hold Open With Sleeve Nuts				
5811 x SN	Multi-Size 1-6	689	285231	12
5811 x SN	Multi-Size 1-6	690	285353	12
Hold Open, With Sleeve Nuts				
5821T x SN	Holder/Stop Thumbturn, Multi-Size 1-6	689	285233	14
5821T x SN	Holder/Stop Thumbturn, Multi-Size 1-6	690	285354	14
Accessories				
SN-134	Sleeve Nut Pkg., 1-3/4" Door	689	285225	0.2
SN-134	Sleeve Nut Pkg., 1-3/4" Door	690	285355	0.2
5800RDP	Narrow Frame Drop Plate, regular arm	689	286031	4
5800RDP	Narrow Frame Drop Plate, regular arm	690	286032	4
5800NDP	Narrow Top Rail Drop Plate, parallel arm	689	286033	4
5800NPD	Narrow Top Rail Drop Plate, parallel arm	690	286034	4

Notes:

- Closers tri-packed
- Case quantity = 4
- SN-134 = 4 per pack; supplied standard with all 5800 door closers
- TBGN134-47 = 4 sets per pack
- FLASHship™ reserves the right to limit quantities
- For heavy-duty parallel rigid arm applications, specify 5821 or 5821T, stop is removable

Fax 877-888-2772, email flashship@assaabloy.com or use
Online Order Entry at www.assaabloydss.com/extranet by clicking the FLASHship™ icon

Note: FLASHship™ reserves the right to limit quantities.

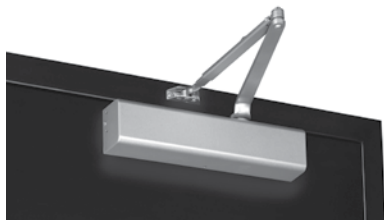
Copyright © 2015, Yale Security Inc., an ASSA ABLOY Group company. All rights reserved. Reproduction in whole or in part without the express written permission of Yale Security Inc. is prohibited.

An ASSA ABLOY Group brand

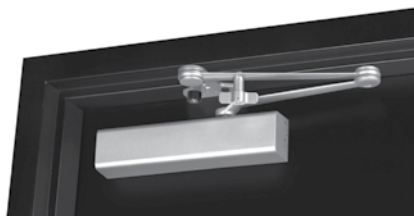
ASSA ABLOY



2700 Series: Architectural



2701 Non-Hold Open



2721T Hold Open

Model #	Description	Finish	FLASHship™ West #	Approx. Wt. Each (Lbs)
Non-Hold Open, with Sleeve Nuts				
2701	Multi-Size 1-6	689	285191	6.5
2701	Multi-Size 1-6	690	285347	6.5
Non-Hold Open, With Sleeve Nuts				
2721 x SN	Stop Only, Multi-Size 1-6	689	285193	7.75
2721 x SN	Stop Only, Multi-Size 1-6	690	285348	7.75
Hold Open, with Sleeve Nuts				
2711	Multi-Size 1-6	689	285192	6.5
2711	Multi-Size 1-6	690	285349	6.5
Hold Open, With Sleeve Nuts				
2721T x SN	Holder/Stop Thumbturn, Multi-Size 1-6	689	285194	7.75
2721T x SN	Holder/Stop Thumbturn, Multi-Size 1-6	690	285350	7.75
Accessories				
SN-134	Sleeve Nut Pkg., 1-3/4" Door	689	285225	0.2
SN-134	Sleeve Nut Pkg., 1-3/4" Door	690	285355	0.2
3158	Exposed-Back/Narrow Top Rail Drop Plate	689	286035	2
3158	Exposed-Back/Narrow Top Rail Drop Plate	690	286036	2

Notes:

- Closers tri-packed
- Case quantity:
2701 = 6
2711, 2721, 2721T = 4
- SN-134 = 4 per pack; supplied standard with all 2700 door closers
- TBGN134-38 = 4 sets per pack
- FLASHship™ reserves the right to limit quantities
- For heavy-duty parallel rigid arm applications, specify 2721 or 2721T, stop is removable

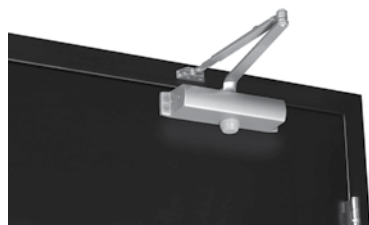
Fax 877-888-2772, email flashship@assaabloy.com or use Online Order Entry at www.assaabloydss.com/extranet by clicking the FLASHship™ icon

Note: FLASHship™ reserves the right to limit quantities.

Copyright © 2015, Yale Security Inc., an ASSA ABLOY Group company. All rights reserved. Reproduction in whole or in part without the express written permission of Yale Security Inc. is prohibited.



1100 Series: Industrial



1101BF Non-Hold Open

Model #	Description	Finish	FLASHship™ West #	Approx. Wt. Each (Lbs)
Non-Hold Open With Sleeve Nuts				
1101BF	Multi-Size 1-4	689	285227	6
1101BF	Multi-Size 1-4	690	285357	6
Hold Open With Sleeve Nuts				
1111BF	Multi-Size 1-4	689	285228	8
1111BF	Multi-Size 1-4	690	285358	8
Accessories				
1100COV	Optional Cover for 1100 Series	689	285229	0.5
1100COV	Optional Cover for 1100 Series	690	285359	0.5
SN-134	Sleeve Nut Pkg., 1-3/4" Door	689	285225	0.2
SN-134	Sleeve Nut Pkg., 1-3/4" Door	690	285355	0.2

Notes:

- Closers tri-packed
- Case quantity:
1101BF = 6
1111BF = 4
- SN-134 = 4 per pack; supplied standard with all 1100 door closers
- TBGN134-38 = 4 sets per pack
- FLASHship™ reserves the right to limit quantities.

Fax 877-888-2772, email flashship@assaabloy.com or use
Online Order Entry at www.assaabloydss.com/extranet by clicking the FLASHship™ icon

Note: FLASHship™ reserves the right to limit quantities.

Copyright © 2015, Yale Security Inc., an ASSA ABLOY Group company. All rights reserved. Reproduction in whole or in part without the express written permission of Yale Security Inc. is prohibited.

An ASSA ABLOY Group brand

ASSA ABLOY



Augusta - AU

Design	Model #	Finish	Strike	Cylinder	FLASHship™ West #	Approx. Wt. Each (Lbs)
With Cylinder Override						
AU	E4761LN	626	497 ANSI	1802, 6-Pin, PARA Keyed Random	285236	7.2
AU	E4761LN	626	497 ANSI	2802, 6-Pin, Schlage® C Keyed Random	285237	7.2
With Cylinder Override (Small Format Interchangeable Core)						
BAU	E4761LN	626	497 ANSI	Less Core	285238	7.2

Note: FLASHship™ reserves the right to limit quantities.

Fax 877-888-2772, email flashship@assaabloy.com or use
Online Order Entry at www.assaabloydss.com/extranet by clicking the FLASHship™ icon

Note: FLASHship™ reserves the right to limit quantities.

Copyright © 2015, Yale Security Inc., an ASSA ABLOY Group company. All rights reserved. Reproduction
in whole or in part without the express written permission of Yale Security Inc. is prohibited.

An ASSA ABLOY Group brand

ASSA ABLOY



Fax 877-888-2772, email flashship@assaabloy.com or use
Online Order Entry at www.assaabloydss.com/extranet by clicking the FLASHship™ icon
Note: FLASHship™ reserves the right to limit quantities.

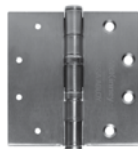
Copyright © 2015, Pemko Manufacturing Co., an ASSA ABLOY Group company. All rights reserved.
Reproduction in whole or in part without the express written permission of Pemko Manufacturing Co. is prohibited.

ASSA ABLOY

The global leader in
door opening solutions



1502 Spring Hinge



TA2714 Five Knuckle Hinge

Model #	Size (in.)	Options	Finish	FLASHship™ West #	Approx. Wt. Each (Lbs)
Spring Hinges - Standard Weight					
1502	4-1/2" x 4-1/2"	-	US26D	285496	1
3 Knuckle Hinges - Heavy Weight					
TA786	4-1/2" x 4-1/2"	-	US26D	285521	2
3 Knuckle Hinges - Standard Weight					
TA714	4-1/2" x 4-1/2"	-	US26D	285520	1
5 Knuckle Hinges - Standard Weight					
TA2314	4-1/2" x 4-1/2"	-	US26D	285513	1
TA2314	4-1/2" x 4-1/2"	NRP	US26D	285514	1
TA2314	4-1/2" x 4-1/2"	-	US32D	285515	1
TA2314	4-1/2" x 4-1/2"	NRP	US32D	285516	1
T2714	4-1/2" x 4-1/2"	-	US26D	285498	1
TA2714	4-1/2" x 4-1/2"	-	USP	285499	1
TA2714	4-1/2" x 4-1/2"	-	US3	285500	1
TA2714	4-1/2" x 4-1/2"	-	US15	285502	1
TA2714	4-1/2" x 4-1/2"	-	US26	285503	1
TA2714	4-1/2" x 4-1/2"	-	US26D	285504	1
TA2714	4-1/2" x 4-1/2"	-	US10	285501	1
TA2714	4-1/2" x 4-1/2"	NRP	US26D	285505	1
TB2714	4-1/2" x 4-1/2"	-	US26D	285508	1
TA2714	5" x 4-1/2"	-	US26D	285509	1
5 Knuckle Hinges - Heavy Weight					
T4A3786	4-1/2" x 4-1/2"	-	US26D	285510	1.5
T4A3786	4-1/2" x 4-1/2"	NRP	US26D	285511	1.5
T4A3786	5" x 4-1/2"	-	US26D	285512	2
T4A3386	4-1/2" x 4-1/2"	-	US32D	285517	1.5
T4A3386	4-1/2" x 4-1/2"	NRP	US32D	285518	1.5
T4A3386	5" x 4-1/2"	NRP	US32D	285519	2

Note: FLASHship™ reserves the right to limit quantities.
NRP=Non Removable Pin

ASSA ABLOY

The global leader in
door opening solutions

Fax 877-888-2772, email flashship@flashship@assaabloy.com or use
Online Order Entry at www.assaabloydss.com/extranet by clicking the FLASHship™ icon

Note: FLASHship™ reserves the right to limit quantities.

Copyright © 2012, 2015, McKinney Products Company, an ASSA ABLOY Group company. All rights reserved.
Reproduction in whole or in part without the express written permission of McKinney Products Company is prohibited.



MacPro® MP79 Hinge



ElectroLynx® Hinge

Model #	Size (in.)	Options	Finish	FLASHship™ West #	Approx. Wt. Each (Lbs)
MacPro® Hinges					
MPB79	4-1/2" x 4-1/2"	-	US26D	285527	1
MPB79	4-1/2" x 4-1/2"	NRP	US26D	285528	1
MPB79	4-1/2" x 4-1/2"	-	USP	285529	1
MPB79	4-1/2" x 4-1/2"	-	US10BE	286095	1
MPB79	4-1/2" x 4-1/2"	NRP	US10BE	286096	1
MPB91	4-1/2" x 4-1/2"	-	US32D	285530	1
MPB91	4-1/2" x 4-1/2"	NRP	US32D	285531	1
MP79	4-1/2" x 4-1/2"	-	US26D	285532	1.5
MP79	4-1/2" x 4-1/2"	-	US10BE	286097	1.5
MPB68	4-1/2" x 4-1/2"	-	US26D	285533	1.5
MPB68	4-1/2" x 4-1/2"	NRP	US26D	285534	1.5
MPB99	4-1/2" x 4-1/2"	-	US32D	285535	1.5
MPB99	4-1/2" x 4-1/2"	NRP	US32D	285536	1.5
MPS60	4-1/2" x 4-1/2"	-	US26D	285537	1
ElectroLynx® Hinges					
TA2714	4-1/2" x 4-1/2"	QC4	US26D	285522	1
TA2714	4-1/2" x 4-1/2"	QC8	US26D	285524	1
TA2714	4-1/2" x 4-1/2"	QC12	US26D	285526	1
T4A3786	4-1/2" x 4-1/2"	QC4	US26D	285523	1.5
T4A3786	4-1/2" x 4-1/2"	QC8	US26D	285525	1.5
ElectroLynx® Cables					
QC-C003	3"	12 Wire 22AWG	-	285538	0.1
QC-C200	26"	12 Wire 22AWG	-	285539	0.1
QC-C206	32"	12 Wire 22AWG	-	285540	0.1
QC-C300	38"	12 Wire 22AWG	-	285541	0.1
QC-C306	44"	12 Wire 22AWG	-	285542	0.2
QC-C400	50"	12 Wire 22AWG	-	285543	0.2
QC-C1500	15'2"	12 Wire 22AWG	-	285544	0.7
QC-C1500P	15'2'	12 Wire 22AWG	-	285545	0.7

Note: FLASHship™ reserves the right to limit quantities.

Fax 877-888-2772, email flashship@assaabloy.com or use
Online Order Entry at www.assaabloydss.com/extranet by clicking the FLASHship™ icon

Note: FLASHship™ reserves the right to limit quantities.

Copyright © 2012, 2015, McKinney Products Company, an ASSA ABLOY Group company. All rights reserved.
Reproduction in whole or in part without the express written permission of McKinney Products Company is prohibited.

ASSA ABLOY

The global leader in
door opening solutions



PEMKO

ASSA ABLOY

The global leader in
door opening solutions

Fax 877-888-2772, email flashship@assaabloy.com or use
Online Order Entry at www.assaabloydss.com/extranet by clicking the FLASHship™ icon

Note: FLASHship™ reserves the right to limit quantities.

Copyright © 2015, Pemko Manufacturing Co., an ASSA ABLOY Group company. All rights reserved.
Reproduction in whole or in part without the express written permission of Pemko Manufacturing Co. is prohibited.



Markar 300 Series Hinges

Model #	Description	FLASHship™ West #	Approx. Wt. Each (Lbs)
Markar 14 Gauge Stainless Steel Pin & Barrel Continuous Hinges			
FM300-83	Edge Mount Pin & Barrel Hinge, Stainless Steel, 83-1/8" Long	285546	12.9
FM300-95	Edge Mount Pin & Barrel Hinge, Stainless Steel, 95" Long	285547	14.8
FM300-79	Edge Mount Pin & Barrel Hinge, Stainless Steel, 79-3/16" Long	285548	12.5
HG305-83	Edge Mount Pin & Barrel Hinge Guard, Double Return, Stainless Steel, 83-1/8" Long	285549	13.5
HG305-95	Edge Mount Pin & Barrel Hinge Guard, Double Return, Stainless Steel, 95" Long	285550	15.5
HG315-83	Edge Mount Pin & Barrel Hinge Guard, Single Return, Stainless Steel, 83-1/8" Long	285551	13.3
HG315-95	Edge Mount Pin & Barrel Hinge Guard, Single Return, Stainless Steel, 95" Long	285552	15.3

Note: FLASHship™ reserves the right to limit quantities.

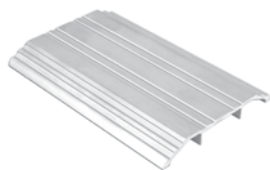
Fax 877-888-2772, email flashship@assaabloy.com or use
Online Order Entry at www.assaabloydss.com/extranet by clicking the FLASHship™ icon
Note: FLASHship™ reserves the right to limit quantities.

Copyright © 2015, Pemko Manufacturing Co., an ASSA ABLOY Group company. All rights reserved.
Reproduction in whole or in part without the express written permission of Pemko Manufacturing Co. is prohibited.

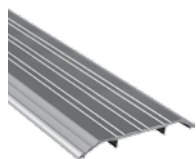
ASSA ABLOY

The global leader in
door opening solutions

PEMKO



170A Threshold



171A Threshold

Model #	Description	FLASHship™ West #	Approx. Wt. Each (Lbs)
Thresholds			
151A36	3" Flat Saddle Threshold, 1/4" High, 36" Long	285553	1.4
154A36	5" Flat Saddle Threshold, 1/4" High, 36" Long	285554	2.8
170A36	4" Fluted Saddle Threshold, 1/2" High, 36" Long	285555	2.1
170A72	4" Fluted Saddle Threshold, 1/2" High, 72" Long	285558	4.1
170D36	4" Fluted Saddle Threshold, 1/2" High, 36" Long, Dark Bronze	285559	2.1
170A48	4" Fluted Saddle Threshold, 1/2" High, 48" Long	285557	2.8
170A36WS/PA	4" Fluted Saddle Threshold, 1/2" High, 36" Long with Wood Screws and Plastic Anchors	285556	2.1
171A36	5" Fluted Saddle Threshold, 1/2" High, 36" Long	285561	2.7
171A36WS/PA	5" Fluted Saddle Threshold, 1/2" High, 36" Long , With Wood Screws and Plastic Anchors	285562	2.7
171A48	5" Fluted Saddle Threshold, 1/2" High, 48" Long	285563	3.6
171A72	5" Fluted Saddle Threshold, 1/2" High, 72" Long	285564	5.4
171D36	5" Fluted Saddle Threshold, 1/2" High, 36" Long, Dark Bronze	285565	2.7
1715A36	5" Heavy Duty Saddle Threshold, 1/2" High, 36" Long	285560	5.2
172A36	6" Fluted Saddle Threshold, 1/2" High, 36" Long	285566	3.1
172A48	6" Fluted Saddle Threshold, 1/2" High, 48" Long	285567	4.1
172A72	6" Fluted Saddle Threshold, 1/2" High, 72" Long	285568	5.5
172D36	6" Fluted Saddle Threshold, 1/2" High, 36" Long, Dark Bronze	285569	3.1
2548A36	8" Fluted Saddle Threshold, 1/2" High, 36" Long	285601	4
2548A72	8" Fluted Saddle Threshold, 1/2" High, 72" Long	285602	8
270A36	4" Fluted Saddle Threshold, 1/4" High, 36" Long	285603	2
270A72	4" Fluted Saddle Threshold, 1/4" High, 72" Long	285604	3.9
271A36	5" Fluted Saddle Threshold, 1/4" High, 36" Long	285606	2.5
271A48	5" Fluted Saddle Threshold, 1/4" High, 48" Long	285608	3.3
271A72	5" Fluted Saddle Threshold, 1/4" High, 72" Long	285609	5
271D36	5" Fluted Saddle Threshold, 1/4" High, 36" Long, Dark Bronze	285610	2.5
272A36	6" Fluted Saddle Threshold, 1/4" High, 36" Long	285611	3
272A48	6" Fluted Saddle Threshold, 1/4" High, 48" Long	285613	4
272A72	6" Fluted Saddle Threshold, 1/4" High, 72" Long	285614	6.1
272D36	6" Fluted Saddle Threshold, 1/4" High, 36" Long, Dark Bronze	285615	3
2748A36	8" Fluted Saddle Threshold, 1/4" High, 36" Long	285616	3.9

Note: FLASHship™ reserves the right to limit quantities.

ASSA ABLOY

The global leader in
door opening solutions

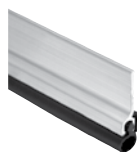
Fax 877-888-2772, email flashship@assaabloy.com or use
Online Order Entry at www.assaabloydss.com/extranet by clicking the FLASHship™ icon

Note: FLASHship™ reserves the right to limit quantities.

Copyright © 2015, Pemko Manufacturing Co., an ASSA ABLOY Group company. All rights reserved.
Reproduction in whole or in part without the express written permission of Pemko Manufacturing Co. is prohibited.



210AV Door Shoe



303AS Jamb Set

Model #	Description	FLASHship™ West #	Approx. Wt. Each (Lbs)
Thresholds (Cont.)			
2748A36	8" Fluted Saddle Threshold, 1/4" High, 36" Long	285616	3.9
2748A72	8" Fluted Saddle Threshold, 1/4" High, 72" Long	285617	7.8
2005AT36	5" Latching Panic Threshold, 1/2" High, 36" Long with TPE Seal	285584	2.5
2005AT48	5" Latching Panic Threshold, 1/2" High, 48" Long with TPE Seal	285585	3.3
2005AT72	5" Latching Panic Threshold, 1/2" High, 72" Long with TPE Seal	285586	5
2008STCxQ380A36	4" Acoustic Threshold, 1/2" High, 36" Long with Encased Foam Seal	285587	1.7
252X3AFG36	5-1/8" Thermal Barrier Saddle Threshold, 1/2" High, 36" Long	285600	3.3
Door Shoes			
210AV36	Aluminum L Shape Door Shoe, Drip Ledge, Vinyl Bottom Seal, 36"	285588	1
210DV36	Dark, Aluminum L Shape Door Shoe, Drip Ledge, Vinyl Bottom Seal, 36"	285589	1
210DV48	Dark, Aluminum L Shape Door Shoe, Drip Ledge, Vinyl Bottom Seal, 48"	285590	1.2
216AV36	Aluminum U Shape Door Shoe, Drip Ledge, Vinyl Bottom Seal, 1-3/4" Door, 36"	285591	1.2
216DV36	Dark, Aluminum U Shape Door Shoe, Drip Ledge, Vinyl Bottom Seal, 1-3/4" Door, 36"	285592	1.2
216PWW36	Painted White, Aluminum U Shape Door Shoe, Drip Ledge, Vinyl Bottom Seal, 1-3/4" Door, 36"	285593	1.2
2173AV36	Aluminum U Shape Door Shoe, Notched Vinyl Bottom Seal, 1-3/4" Door, 36"	285595	1
2173DV36	Dark, Aluminum U Shape Door Shoe, Notched Vinyl Bottom Seal, 1-3/4" Door, 36"	285596	1
221AV36	Aluminum U Shape 3" Door Shoe/Kickplate, Vinyl Bottom Seal, 1-3/4" Door, 36"	285597	3.1
2343AV36	Aluminum Door Shoe, Notched Vinyl Bottom Seal, 1-3/16" Wide, 36"	285598	1
Jamb Sets			
303AS3684	Silicone Perimeter Door Seal Kit, Aluminum Channel, 36" x 84" Opening	285629	1.2
303AS7284	Silicone Perimeter Door Seal Kit, Aluminum Channel, 72" x 84" Opening	285630	1.4
303DS3684	Silicone Perimeter Door Seal Kit, Dark Bronze Aluminum Channel, 36" x 84" Opening	285634	1.2
303AV3684	Vinyl Perimeter Door Seal Kit, Aluminum Channel, 36" x 84" Opening	285631	1.2
303AV3684TK	Vinyl Perimeter Door Seal Kit w/Tek Screws, Aluminum Channel, 36" x 84" Opening	285632	1.2
303DV3684	Vinyl Perimeter Door Seal Kit, Dark Bronze Aluminum Channel, 36" x 84" Opening	285635	1.2
303AV7284	Vinyl Perimeter Door Seal Kit, Aluminum Channel, 72" x 84" Opening	285633	1.4
305CR3684	Perimeter Gasketing, Clear Aluminum Black Sponge EPDM Insert, 36" x 84" Opening	285638	1.2
305CN84	Split Astragal/Meeting Stile Seal, Clear Aluminum, Gray EPDM Insert, 84"	285636	0.5
305CN96	Split Astragal/Meeting Stile Seal, Clear Aluminum, Gray EPDM Insert, 96"	285637	0.6
319CN3684	Perimeter Gasketing, Clear Anodized Aluminum with Black EPDM insert, 36" x 84" Opening	285645	1.8
332CR3684	Perimeter Gasketing, Clear Anodized Aluminum with Black Sponge EPDM insert, 36" x 84" Opening	285646	1.4

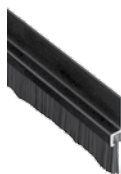
Fax 877-888-2772, email flashship@assaabloy.com or use
 Online Order Entry at www.assaabloydss.com/extranet by clicking the FLASHship™ icon
 Note: FLASHship™ reserves the right to limit quantities.

Copyright © 2015, Pemko Manufacturing Co., an ASSA ABLOY Group company. All rights reserved.
 Reproduction in whole or in part without the express written permission of Pemko Manufacturing Co. is prohibited.

ASSA ABLOY

The global leader in
door opening solutions

PEMKO



18061DNB Brush Door Sweep

345DV Door Bottom Sweep

Model #	Description	FLASHship™ West #	Approx. Wt. Each (Lbs)
Door Sweeps			
18061CNB36	Brush Door Sweep, 3/4" Clear Aluminum Channel, 5/8" Brush, 36" Long	285571	0.4
18061CNB48	Brush Door Sweep, 3/4" Clear Aluminum Channel, 5/8" Brush, 48" Long	285572	0.5
18061CNB84	Brush Door Sweep, 3/4" Clear Aluminum Channel, 5/8" Brush, 84" Long	285573	0.9
18061CNB96	Brush Door Sweep, 3/4" Clear Aluminum Channel, 5/8" Brush, 96" Long	285574	1.2
18061DNB36	Brush Door Sweep, 3/4" Dark Bronze Aluminum Channel, 5/8" Brush, 36" Long	285575	0.4
18061DNB84	Brush Door Sweep, 3/4" Dark Bronze Aluminum Channel, 5/8" Brush, 84" Long	285576	0.9
18062CNB36	Brush Door Sweep, 7/8" Clear Aluminum Channel, 5/8" Brush, 36" Long	285577	0.6
18062CNB48	Brush Door Sweep, 7/8" Clear Aluminum Channel, 5/8" Brush, 48" Long	285578	0.5
18062CNB84	Brush Door Sweep, 7/8" Clear Aluminum Channel, 5/8" Brush, 84" Long	285579	0.9
18062DNB36	Brush Door Sweep, 7/8" Dark Bronze Aluminum Channel, 5/8" Brush, 36" Long	285580	0.5
18100CNB36	Brush Door Sweep, 7/8" Clear Aluminum Channel, 1" Brush, 36" Long	285581	0.5
18100CNB48	Brush Door Sweep, 7/8" Clear Aluminum Channel, 1" Brush, 48" Long	285582	0.7
18137CNB36	Brush Door Sweep, 7/8" Clear Aluminum Channel, 1-3/8" Brush, 36" Long	285583	0.5
315CN36	Neoprene Door Sweep, 1-1/4" Clear Aluminum Channel, 7/16" Neoprene, 36" Long	285639	0.4
315CN36TK	Neoprene Door Sweep w/Tek Screws, 1-1/4" Clear Aluminum Channel, 7/16" Neoprene, 36" Long	285640	0.4
315CN42	Neoprene Door Sweep, 1-1/4" Clear Aluminum Channel, 7/16" Neoprene, 42" Long	285641	0.5
315CN48	Neoprene Door Sweep, 1-1/4" Clear Aluminum Channel, 7/16" Neoprene, 48" Long	285642	1
315DN36	Neoprene Door Sweep, 1-1/4" Dark Bronze Aluminum Channel, 7/16" Neoprene, 36" Long	285643	0.4
315DN48	Neoprene Door Sweep, 1-1/4" Dark Bronze Aluminum Channel, 7/16" Neoprene, 48" Long	285644	1
345AV36	Door Bottom Sweep w/Rain Drip, Mill Finish Aluminum, Gray Vinyl Insert, 36" Long	285652	0.5
345AV48	Door Bottom Sweep w/Rain Drip, Mill Finish Aluminum, Gray Vinyl Insert, 48" Long	285653	0.6
345DV36	Door Bottom Sweep w/Rain Drip, Dark Bronze Aluminum, Gray Vinyl Insert, 36" Long	285655	0.5
345ANB36	Door Bottom Sweep w/Rain Drip, Mill Finish Aluminum, Nylon Brush Insert, 36" Long	285650	0.5
345A36	Door Bottom Rain Drip, Mill Finish Aluminum, 36" Long	285649	0.5
345D36	Door Bottom Rain Drip, Dark Bronze Aluminum, 36" Long	285654	0.5
345ANB48	Door Bottom Sweep with Rain Drip, Mill Finish Aluminum, Nylon Brush Insert, 48" Long	285651	0.6
3452CNB36	Door Bottom Sweep with Rain Drip, Clear Aluminum, Nylon Brush Insert, 36" Long	285648	0.5
3452AV36	Door Bottom Sweep with Rain Drip, Mill Finish Aluminum, Vinyl Insert, 36" Long	285647	0.5

Note: FLASHship™ reserves the right to limit quantities.

ASSA ABLOY

The global leader in
door opening solutions

Fax 877-888-2772, email flashship@assaabloy.com or use
Online Order Entry at www.assaabloydss.com/extranet by clicking the FLASHship™ icon

Note: FLASHship™ reserves the right to limit quantities.

Copyright © 2015, Pemko Manufacturing Co., an ASSA ABLOY Group company. All rights reserved.
Reproduction in whole or in part without the express written permission of Pemko Manufacturing Co. is prohibited.

Model #	Description	FLASHship™ West #	Approx. Wt. Each (Lbs)
Overlapping Astragals			
357SP84	Overlapping Astragals, 1/8" Thick, 2" Wide, Galvannealed Steel (11 ga), 84" Long	285661	5.9
357C84	Overlapping Astragals, 1/8" Thick, 2" Wide, Clear Anodized Aluminum, 84" Long	285659	2.1
357SP96	Overlapping Astragals, 1/8" Thick, 2" Wide, Galvannealed Steel (11 ga), 96" Long	285662	6.8
357SS84	Overlapping Astragals, 1/8" Thick, 2" Wide, Stainless Steel (11 ga), 84" Long	285663	9
357C96	Overlapping Astragals, 1/8" Thick, 2" Wide, Clear Anodized Aluminum, 96" Long	285660	2.4
Meeting Stile Split Astragal			
18041CNB84	Brush Meeting Stile Gasketing, 3/4" Clear Aluminum Channel, 3/8" Exposed Brush, 1 piece @84"	285570	0.9
29310CS84	Straight Snap-Cover Meeting Stile, Clear Anodized Aluminum, Silicone Seal, 1 piece @84"	285623	1.5
29324CNB84	Snap Cover Meeting Stile, Clear Anodized Aluminum, 1/4" x 7/8", with 3/8" Gray Nylon Brush, 1 piece @84"	285625	1.5
369AP84	Meeting Stile Mill Aluminum Pile Insert, 84"	285664	0.3
Rain Drip			
346C40	Door Top Rain Drip, 2-1/2" Clear Aluminum Projection, 40" Long	285656	1.2
346C52	Door Top Rain Drip, 2-1/2" Clear Aluminum Projection, 52" Long	285657	1.5
346C76	Door Top Rain Drip, 2-1/2" Clear Aluminum Projection, 76" Long	285658	2.2

Note: FLASHship™ reserves the right to limit quantities.

Fax 877-888-2772, email flashship@assaabloy.com or use
Online Order Entry at www.assaabloydss.com/extranet by clicking the FLASHship™ icon
Note: FLASHship™ reserves the right to limit quantities.

Copyright © 2015, Pemko Manufacturing Co., an ASSA ABLOY Group company. All rights reserved.
Reproduction in whole or in part without the express written permission of Pemko Manufacturing Co. is prohibited.

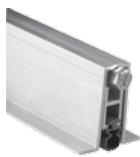
ASSA ABLOY

The global leader in
door opening solutions

PEMKO



346C Rain Drip



411APKL Automatic Door Bottom

Model #	Description	FLASHship™ West #	Approx. Wt. Each (Lbs)
Automatic Door Bottoms			
411APKL36	Full Mortised Auto Door Bottom, 1-3/8" x 9/16" Aluminum Channel, PemkoPrene™ Insert, Low Closing Force, 36"	285667	1.5
411ARL32	Full Mortised Auto Door Bottom, Mill Finish Aluminum with Black Sponge EPDM Insert, 32" Long	285668	1.3
411ARL36	Full Mortised Auto Door Bottom, 1-3/8" x 9/16" Aluminum Channel, Sponge EPDM Insert, Low Closing Force, 36"	285669	1.5
411ANBL36	Full Mortised Auto Door Bottom, Mill Finish Aluminum w/ Black Nylon Brush Insert, 36" Long	285666	1.5
434APKL36	Full Mortised Auto Door Bottom, 1-5/16" x 27/32" Aluminum Channel, PemkoPrene™ Insert, 36"	285673	1.6
434ARL36	Full Mortised Auto Door Bottom, Mill Finish Aluminum with Black Sponge EPDM Insert, 36" Long	285674	2.5
4131CRL36	Surface and Semi Mortised Auto Door Bottom, Clear Aluminum, Black Sponge EPDM Insert, 36" Long	285671	1.5
4131CPKL36	Surface and Semi Mortised Auto Door Bottom, Clear Aluminum, Black PemkoPrene™ Insert, 36" Long	285670	1.5
4131DRL36	Surface and Semi Mortised Auto Door Bottom, Dark Bronze Aluminum, Black Sponge EPDM Insert, 36" Long	285672	1.5
PDB411AE36	Acoustic Automatic Door Bottom, Full Mortised, Mill Finish Aluminum, Black EPDM Insert, 36" Long	285695	1.5
PDB411AE48	Acoustic Automatic Door Bottom, Full Mortised, Mill Finish Aluminum, Black EPDM Insert, 48" Long	285697	3
PDB4131DE36	Acoustic Automatic Door Bottom, Semi Mortised, Dark Bronze Anodized Aluminum, Black EPDM Insert, 36" Long	285699	1.5

Note: FLASHship™ reserves the right to limit quantities.

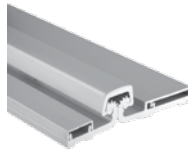
ASSA ABLOY

The global leader in
door opening solutions

Fax 877-888-2772, email flashship@assaabloy.com or use
Online Order Entry at www.assaabloydss.com/extranet by clicking the FLASHship™ icon

Note: FLASHship™ reserves the right to limit quantities.

Copyright © 2015, Pemko Manufacturing Co., an ASSA ABLOY Group company. All rights reserved.
Reproduction in whole or in part without the express written permission of Pemko Manufacturing Co. is prohibited.



CFM Continuous Geared Hinges

CFS-CP Continuous Geared Hinges

Model #	Description	FLASHship™ West #	Approx. Wt. Each (Lbs)
Aluminum Geared Continuous Hinges			
CFM83HD1	Continuous Geared Hinge, Full Mortise, Clear Aluminum, Heavy Duty 83"	285677	6.3
CFM83SLF-HD1	Continuous Geared Hinge, Full Mortise, Short Leaf Flush, Clear Aluminum, Heavy Duty 83"	285678	6
CFM83SLI-HD1	Continuous Geared Hinge, Full Mortise, Short Leaf Inset, Clear Aluminum, Heavy Duty 83"	285679	5.5
CFM95HD1	Continuous Geared Hinge, Full Mortise, Clear Aluminum, Heavy Duty 95"	285680	7.2
CFM95SLF-HD1	Continuous Geared Hinge, Full Mortise, Short Leaf Flush, Clear Aluminum, Heavy Duty 95"	285681	7.2
CFS83	Continuous Geared Hinge, Full Surface, Clear Aluminum, Standard Duty, 83"	285682	7.4
CFS83CP	Continuous Geared Hinge, Full Surface, Center Pivot, Clear Aluminum, Standard Duty, 83"	285683	7.5
CFS83HD1	Continuous Geared Hinge, Full Surface, Clear Aluminum, Heavy Duty 83"	285685	7.4
CFS83CP-HD1	Continuous Geared Hinge, Full Surface, Center Pivot, Clear Aluminum, Heavy Duty 83"	285684	7.7
DFM83HD1	Continuous Geared Hinge, Full Mortise, Dark Bronze Aluminum, Heavy Duty 83"	285686	6.3
DFS83	Continuous Geared Hinge, Full Surface, Dark Bronze Aluminum, Standard Duty, 83"	285687	7.4
Adhesive Gasket			
HSS2000-18	HSS Adhesive Intumescent Gasket, 3/64" x 7/16", 18' Roll	285688	0.2
HSS2000-21	HSS Adhesive Intumescent Gasket, 3/64" x 7/16", 21' Roll	285689	0.4
HSS2000-24	HSS Adhesive Intumescent Gasket, 3/64" x 7/16", 24' Roll	285690	0.4
HSS2000xS88D3684	Combination HSS Adhesive Intumescent Gasket and S88 Silicone Gasketing, Dark Brown, 36" x 84" Opening	285692	0.7
HSS2000xS88D4884	Combination HSS Adhesive Intumescent Gasket and S88 Silicone Gasketing, Dark Brown, 48" x 84" Opening	285693	0.8
HSS2000xS44D4884	Combination HSS Adhesive Intumescent Gasket and S44 Silicone Gasketing, Dark Brown, 48" x 84" Opening	285691	0.5
PK33BL17	PemkoPrene™ Adhesive Perimeter Gasket, 3/16" x 3/8", Black, 17' Roll	285700	0.2
PK33D17	PemkoPrene™ Adhesive Perimeter Gasket, 3/16" x 3/8", Dark Brown, 17' Roll	285702	0.2
PK33BL20	PemkoPrene™ Adhesive Perimeter Gasket, 3/16" x 3/8", Black, 20' Roll	285701	0.2
PK55D17	PemkoPrene™ Adhesive Gasket, 3/16" x 1/2", Dark, 17' Roll	285705	0.3
PK55D20	PemkoPrene™ Adhesive Gasket, 3/16" x 1/2", Dark, 20' Roll	285706	0.3
PK55BL17	PemkoPrene™ Adhesive Gasket, 3/16" x 1/2", Black, 17' Roll	285703	0.3
PK55BL20	PemkoPrene™ Adhesive Gasket, 3/16" x 1/2", Black, 20' Roll	285704	0.3
S44D17	Silicone Fin Smoke Gasket, 5/16" x 7/16", Dark 17' Roll with Self Adhesive	285713	0.5
S44D20	Silicone Fin Smoke Gasket, 5/16" x 7/16", Dark 20' Roll with Self Adhesive	285714	0.6
S44D21	Silicone Fin Smoke Gasket, 5/16" x 7/16", Dark 21' Roll with Self Adhesive	285715	0.6
S44D25	Silicone Fin Smoke Gasket, 5/16" x 7/16", Dark 25' Roll with Self Adhesive	285716	0.8
S44W17	Silicone Fin Smoke Gasket, 5/16" x 7/16", White 17' Roll with Self Adhesive	285717	0.5

Note: FLASHship™ reserves the right to limit quantities.

Fax 877-888-2772, email flashship@assaabloy.com or use
Online Order Entry at www.assaabloydss.com/extranet by clicking the FLASHship™ icon

Note: FLASHship™ reserves the right to limit quantities.

Copyright © 2015, Pemko Manufacturing Co., an ASSA ABLOY Group company. All rights reserved.
Reproduction in whole or in part without the express written permission of Pemko Manufacturing Co. is prohibited.

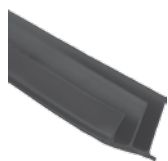
ASSA ABLOY

The global leader in
door opening solutions

PEMKO



S44D Adhesive Gasket



S773D Adhesive Gasket

Model #	Description	FLASHship™ West #	Approx. Wt. Each (Lbs)
Adhesive Gasket (Cont.)			
S88BL17	Silicone Bulb Smoke Gasket, 1/4" x 1/2", Black, 17' Roll with Self Adhesive	285729	0.5
S88BL20	Silicone Bulb Smoke Gasket, 1/4" x 1/2", Black, 20' Roll with Self Adhesive	285730	0.6
S88BL510	Silicone Bulb Smoke Gasket, 1/4" x 1/2", Black, 510' Roll with Self Adhesive	285731	13.6
S88D17	Silicone Bulb Smoke Gasket, 1/4" x 1/2", Dark, 17' Roll with Self Adhesive	285732	0.5
S88D18	Silicone Bulb Smoke Gasket, 1/4" x 1/2", Dark, 18' Roll with Self Adhesive	285733	0.6
S88D20	Silicone Bulb Smoke Gasket, 1/4" x 1/2", Dark, 20' Roll with Self Adhesive	285734	0.6
S88D21	Silicone Bulb Smoke Gasket, 1/4" x 1/2", Dark, 21' Roll with Self Adhesive	285736	0.7
S88D25	Silicone Bulb Smoke Gasket, 1/4" x 1/2", Dark, 25' Roll with Self Adhesive	285737	0.7
S88D204	Silicone Bulb Smoke Gasket, 1/4" x 1/2", Dark, 204' Roll with Self Adhesive	285735	0.6
S88D510	Silicone Bulb Smoke Gasket, 1/4" x 1/2", Dark, 510' Roll with Self Adhesive	285738	13.6
S88W17	Silicone Bulb Smoke Gasket, 1/4" x 1/2", White, 17' Roll with Self Adhesive	285739	0.5
S88W20	Silicone Bulb Smoke Gasket, 1/4" x 1/2", White 20' Roll with Self Adhesive	285740	0.6
S771D7	Silicone Astragal/Meeting Stile Gasket, 9/32" x 7/16", Dark, 7' Roll with Self Adhesive	285719	0.1
S771C7	Silicone Astragal/Meeting Stile Gasket, 9/32" x 7/16", Clear, 7' Roll with Self Adhesive	285718	0.1
S772D7	Silicone Astragal/Meeting Stile Gasket, 3/16" x 1/2", Dark, 7' Roll with Self Adhesive	285720	0.1
S772D8	Silicone Astragal/Meeting Stile Gasket, 3/16" x 1/2", Dark, 8' Roll with Self Adhesive	285721	0.1
S773D17	Silicone Triple Fin Acoustic/Smoke Gasket, 3/8" x 1/2", Dark 17' Roll with Self Adhesive	285724	0.4
S773D18	Silicone Triple Fin Acoustic/Smoke Gasket, 3/8" x 1/2", Dark 18' Roll with Self Adhesive	285725	0.4
S773D20	Silicone Triple Fin Acoustic/Smoke Gasket, 3/8" x 1/2", Dark 20' Roll with Self Adhesive	285726	0.5
S773D21	Silicone Triple Fin Acoustic/Smoke Gasket, 3/8" x 1/2", Dark 21' Roll with Self Adhesive	285727	0.5
S773BL17	Silicone Triple Fin Acoustic/Smoke Gasket, 3/8" x 1/2", Black 17' Roll with Self Adhesive	285722	0.4
S773BL20	Silicone Triple Fin Acoustic/Smoke Gasket, 3/8" x 1/2", Black 20' Roll with Self Adhesive	285723	0.5
S773W17	Silicone Triple Fin Acoustic/Smoke Gasket, 3/8" x 1/2", White 17' Roll with Self Adhesive	285728	0.4
Perimeter Gasket			
379CR84	Adjustable Jamb W/S Clear Anodized Aluminum Sponge EPDM Seal, 84"	285665	2.2
45041CNB3684	Door Sweep, 45-Degree Retainer with 13/32" Nylon Brush Clear Anodized , 3/0 x 7/0 Opening	285675	4.3
2891AS36	1/4" x 1-1/2" x 36" Perimeter Gasket, Heavy duty, Mill Aluminum w/Silicone Insert	285619	1.2
2891AS3684	1/4" x 1-1/2" Perimeter Gasket, Heavy Duty, Mill Aluminum, Silicon Insert for 3/0 x 7/0 Opening	285620	7
2891APK3684	1/4" x 1-1/2" Perimeter Gasket, Heavy Duty, Mill Aluminum PemkoPrene™ Seal for 3/0 x 7/0 Opening	285618	7
290APK84	1/4" x 1-1/2" x 84", Jamb Weatherstrip, Mill Aluminum w/PemkoPrene™ seal	285621	1.5

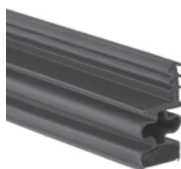
Note: FLASHship™ reserves the right to limit quantities.

ASSA ABLOY

The global leader in
door opening solutions

Fax 877-888-2772, email flashship@assaabloy.com or use
Online Order Entry at www.assaabloydss.com/extranet by clicking the FLASHship™ icon
Note: FLASHship™ reserves the right to limit quantities.

Copyright © 2015, Pemko Manufacturing Co., an ASSA ABLOY Group company. All rights reserved.
Reproduction in whole or in part without the express written permission of Pemko Manufacturing Co. is prohibited.

**MAG349D Adhesive Gasketing**

Model #	Description	FLASHship™ West #	Approx. Wt. Each (Lbs)
Perimeter Gasket (Cont.)			
29324CNB36	Snap Cover Weatherstrip, Clear Anodized Aluminum, 1/4" x 7/8", with 3/8" Gray Nylon Brush, 36"	285624	0.7
29326CNB36	Snap Cover Weatherstrip, Clear Anodized Aluminum, 1/4" x 7/8", with 5/8" Gray Nylon Brush, 36"	285626	0.8
29326DNB36	Snap Cover Weatherstrip, Dark Bronze Anodized Aluminum, 1/4" x 7/8", with 5/8" Black Nylon Brush, 36"	285627	0.8
297AS3684	Jamb Weatherstrip Mill Aluminum w/Silicone Insert 1/4" x 13/16" for 3/0 x 7/0 Opening	285628	1.2
MAG349D-85	Magnetic Kerf-In Weatherstrip, Dark, Foam with Magnetic Insert, 85" Long	285694	0.6
Q102D-97	Pemko, 5/8" Reach, Encased Foam Kerf-In Weatherstrip, Dark, 97" Long	285709	0.3
Q103D-97	Pemko, 3/8" Reach, Encased Foam Kerf-In Weatherstrip, Dark, 97" Long	285710	0.2
Q106D-97	Pemko, 5/8" Reach, Encased Foam Kerf-In Weatherstrip, Dark, 97" Long	285711	0.3

Model #	Finish	Size	FLASHship™ West #	Approx. Wt. Each (Lbs)
Lite Kits (sold in case quantities; 3 lite kits per case)				
LT-B1G	Prime Coat	5" x 20"	286073	?
LT-B1G	Prime Coat	10" x 10"	286074	?
LT-B1G	Prime Coat	4" x 25"	286075	?
LT-B1G	Prime Coat	22" x 28"	286076	?

Note: FLASHship™ reserves the right to limit quantities.

Fax 877-888-2772, email flashship@assaabloy.com or use
Online Order Entry at www.assaabloydss.com/extranet by clicking the FLASHship™ icon
Note: FLASHship™ reserves the right to limit quantities.

Copyright © 2015, Pemko Manufacturing Co., an ASSA ABLOY Group company. All rights reserved.
Reproduction in whole or in part without the express written permission of Pemko Manufacturing Co. is prohibited.

ASSA ABLOY

The global leader in
door opening solutions



ROCKWOOD®

ASSA ABLOY

The global leader in
door opening solutions

48 West Issue September 2015

Fax 877-888-2772, email flashship@assaabloy.com or use
Online Order Entry at www.assaabloydss.com/extranet by clicking the FLASHship™ icon

Note: FLASHship™ reserves the right to limit quantities.

Copyright © 2012, 2015, Rockwood Manufacturing Company, an ASSA ABLOY Group company. All rights reserved.
Reproduction in whole or in part without the express written permission of Rockwood Manufacturing Company is prohibited.

Fax FLASHship orders to 877-888-2772 or email to flashship@assaabloy.com



94C Flush Pull



106 x 70C Pull Plate



70C Push Plate

Model #	Description	Finish	FLASHship™ West #	Approx. Wt. Each (Lbs)
Push Plates				
70B	3-1/2" x 15"	US10B	285885	1
70B	3-1/2" x 15"	US28	285886	1
70B	3-1/2" x 15"	US32D	285887	1
70C	4" x 16"	US3	285891	1
70C	4" x 16"	US10B	285888	1
70C	4" x 16"	US26D	285889	1
70C	4" x 16"	US28	285890	1
70C	4" x 16"	US32D	285892	1
70E	6" x 16"	US32D	285893	2
70F	8" x 16"	US32D	285894	2
Flush Pulls				
94	3-1/2" x 5"	US32D	285906	0.6
94BTB	Set BTB	US32D	285907	0.1
94C	3-1/2" x 5"	US32D	285908	0.6
95A	2-3/16" x 3-1/4"	US26D	285909	0.6
95B	2-11/16" x 4-3/16"	US26	285910	0.6
95B	2-11/16" x 4-3/16"	US26D	285911	0.6
Pull Plates				
102 x 70B	5/8" D x 5-1/2" CTC	US32D	285743	2
102 x 70C	5/8" D x 5-1/2" CTC	US32D	285744	2
105 x 70B	3/4" D x 5-1/2" CTC	US32D	285745	2
105 x 70C	3/4" D x 5-1/2" CTC	US32D	285746	2
106 x 70B	3/4" D x 6" CTC	US32D	285748	2
106 x 70C	3/4" D x 6" CTC	US10B	285749	2
106 x 70C	3/4" D x 6" CTC	US32D	285750	2
107 x 70B	3/4" D x 8" CTC	US32D	285752	2
107 x 70C	3/4" D x 8" CTC	US10B	285753	2
107 x 70C	3/4" D x 8" CTC	US32D	285754	2
110 x 70C	1" D x 8" CTC	US32D	285763	3.5
111 x 70C	1" D x 10" CTC	US32D	285765	4
122 x 70C	3/8" x 1-1/4" x 6" CTC	US10B	285766	2
122 x 70C	3/8" x 1-1/4" x 6" CTC	US32D	285767	2
125 x 70C	1" HR x 6" CTC	US32D	285768	2
126 x 70C	1" HR x 8" CTC	US32D	285769	2

Note: FLASHship™ reserves the right to limit quantities.

Fax 877-888-2772, email flashship@assaabloy.com or use
Online Order Entry at www.assaabloydss.com/extranet by clicking the FLASHship™ icon

Note: FLASHship™ reserves the right to limit quantities.

Copyright © 2012, 2015, Rockwood Manufacturing Company, an ASSA ABLOY Group company. All rights reserved.
Reproduction in whole or in part without the express written permission of Rockwood Manufacturing Company is prohibited.

ROCKWOOD®



132 x 70C Pull Plate

Offset Push Bar Set

320 Lock Protector

409 Concave Door Stop

Model #	Description	Finish	FLASHship™ West #	Approx. Wt. Each (Lbs)
Pull Plates (Cont.)				
132 x 70B	Cast x 5-1/2" CTC	US32D	285771	2
132 x 70C	Cast x 5-1/2" CTC	US32D	285772	2
Straight Door Pulls				
106	3/4" x 6"	US32D	285747	1.2
107	3/4" x 8"	US32D	285751	1.4
110	1" x 8"	US32D	285762	3
111	1" x 10"	US32D	285764	3
Offset Door Pulls				
BF157	1" x 10"	US28	285912	2
BF157	1" x 10"	US32D	285915	2
BF157	1" x 10"	314	285913	2
BF157BTB16	1" x 10"	US28	285919	3
BF158	1" x 12"	US32D	285922	4
Offset Push Pull Sets				
BF15747CT3	10" Offset Pull Bar Set	US28	285916	4.8
BF15747CT3	10" Offset Pull Bar Set	US32D	285918	4.8
BF15747CT3	10" Offset Pull Bar Set	315	285917	4.8
Lock Protectors				
320	Protector	US32D	285783	1.5
320CL	Cylindrical Notched	US32D	285784	1.5
321	Mortise	US32D	285785	1.5
Door Stops				
400	Wall; Cast Convex	US26D	285787	0.3
403	Wall; Cast Concave	US10B	285788	0.3
403	Wall; Cast Concave	US26D	285789	0.3
406	Wall; Wrought Convex	US10B	285790	0.2
406	Wall; Wrought Convex	US26D	285791	0.2
406	Wall; Wrought Convex	US32D	285792	0.2
409	Wall; Wrought Concave	US3	285797	0.2
409	Wall; Wrought Concave	US10	285793	0.2
409	Wall; Wrought Concave	US10B	285794	0.2
409	Wall; Wrought Concave	US26	285795	0.2
409	Wall; Wrought Concave	US26D	285796	0.2
409	Wall; Wrought Concave	US32D	285798	0.2
415	Cast Wall Stop	US26D	285799	0.3
430	Wall; Convex	US26D	285800	0.1

Note: FLASHship™ reserves the right to limit quantities.

ASSA ABLOY

The global leader in
door opening solutions

Fax 877-888-2772, email flashship@assaabloy.com or use
Online Order Entry at www.assaabloydss.com/extranet by clicking the FLASHship™ icon

Note: FLASHship™ reserves the right to limit quantities.

Copyright © 2012, 2015, Rockwood Manufacturing Company, an ASSA ABLOY Group company. All rights reserved.
Reproduction in whole or in part without the express written permission of Rockwood Manufacturing Company is prohibited.



441H Dome Stop



446 Door Stop



466 Heavy Duty Door Stop



470 Door Stop

ROCKWOOD®

Model #	Description	Finish	FLASHship™ West #	Approx. Wt. Each (Lbs)
Door Stops (Cont.)				
440	Low Dome Stop	US10B	285801	0.2
440	Low Dome Stop	US26D	285802	0.2
441	Low Dome Stop	US10B	285803	0.2
441	Low Dome Stop	US26D	285804	0.2
441CU	Dome Stop w/Riser	US26D	285805	0.3
441H	Cast Universal Dome Stop	US26D	285806	0.2
442	High Dome Stop	US10B	285807	0.2
442	High Dome Stop	US26D	285808	0.2
443	High Dome Stop	US26D	285809	0.2
445	Low Dome Stop	US26D	285810	0.3
446	Round Stop	US10B	285811	0.4
446	Round Stop	US26	285812	0.4
446	Round Stop	US26D	285813	0.4
455	Curved Roller Stop	US26D	285814	0.5
456	Straight Roller Stop	US26D	285815	0.5
456L	Straight Roller Stop	US26D	285816	0.5
459	Spring Loaded Plunger	US26D	285817	1.3
460	Kick Down Stop	ALM	285818	0.1
461	Kick Down Stop	US10B	285819	0.1
461	Kick Down Stop	US26D	285820	0.1
461L	Kick Down Stop	US10B	285821	0.1
461L	Kick Down Stop	US26D	285822	0.1
462	Heavy Duty Stop	US2C	285823	0.6
463	Heavy Duty Stop	US32D	285824	0.6
465	Heavy Duty Stop	US26D	285826	0.6
466	Heavy Duty Stop	N/A	285827	0.6
467	Heavy Duty Stop	N/A	285828	0.6
470	Floor Stop	US26D	285829	0.7
471	Floor Stop	US26D	285830	0.7
472	Floor Stop	US26D	285831	0.7
473	Floor Stop	US26D	285832	0.7
474	Floor Stop	US26D	285833	0.7
476	Floor Stop	US26D	285834	0.7
481	Wall Stop	US26D	285836	0.6
481H	Wall Stop	US26D	285837	0.6
482	Wall Stop	US26D	285838	0.6

Note: FLASHship™ reserves the right to limit quantities.

Fax 877-888-2772, email flashship@assaabloy.com or use
Online Order Entry at www.assaabloydss.com/extranet by clicking the FLASHship™ icon

Note: FLASHship™ reserves the right to limit quantities.

Copyright © 2012, 2015, Rockwood Manufacturing Company, an ASSA ABLOY Group company. All rights reserved.
Reproduction in whole or in part without the express written permission of Rockwood Manufacturing Company is prohibited.

ASSA ABLOY

The global leader in
door opening solutions

ROCKWOOD®



555 Flush Bolt



476 Door Stop



570 Dust Strike



580 Surface Bolt



603 Door Guard

Model #	Description	Finish	FLASHship™ West #	Approx. Wt. Each (Lbs)
Door Stops (Cont.)				
483	Wall Stop	US26D	285839	0.6
485	Wall Stop	US26D	285840	0.6
486	Angle Stop	US2C	285841	0.4
487	Heavy Duty Stop	US26D	285842	0.8
491	Automatic Stop	US26D	285843	0.8
494	Automatic Stop	US26D	285844	0.8
518	Brass Wall Stop	US26D	285847	0.2
519	Brass Wall Stop	US26D	285848	0.2
526	Spring Base Stop	NP	285850	0.2
528	Hinge Pin Stop	NP	285851	0.2
Lever Extension Flush Bolts				
550	Flush Bolt	US26D	285852	0.8
555	Flush Bolt	US10B	285853	0.8
555	Flush Bolt	US26	285854	0.8
555	Flush Bolt	US26D	285855	0.8
555	Flush Bolt Extension Rod, 24"	—	286081	1
557	Flush Bolt	US26D	285856	0.8
Dust Proof Strike				
570	Strike	US10B	285857	0.4
570	Strike	US26D	285858	0.4
Surface Bolts				
580-8	8" Bolt Length	US26D	285859	1.1
630-4	4" Bolt Length	US26D	285883	0.8
Roller Latches				
590	w/Cast Strike	US26D	285860	0.6
591	w/ANSI Strike	US26D	285861	0.6
592	w/#161 Strike	US26D	285862	0.6
593	w/Angle Strike	US26D	285863	0.6
594	w/#161 Strike	US26D	285864	0.6
Door Guards				
602	Secret Gate Latch	US26D	285865	1
603	Cast Aluminum	CRM	285867	0.4
604	Cast Brass	US26D	285870	0.4
605	Brass	US26D	285871	0.3
606	Clear Rubber	N/A	285872	0.3

Note: FLASHship™ reserves the right to limit quantities.

ASSA ABLOY

The global leader in
door opening solutions

Fax 877-888-2772, email flashship@assaabloy.com or use
Online Order Entry at www.assaabloydss.com/extranet by clicking the FLASHship™ icon

Note: FLASHship™ reserves the right to limit quantities.

Copyright © 2012, 2015, Rockwood Manufacturing Company, an ASSA ABLOY Group company. All rights reserved.
Reproduction in whole or in part without the express written permission of Rockwood Manufacturing Company is prohibited.



614V Door Kocker/Viewer

622 Door Viewer

802 Coat Hook

1700 Universal
Coordinator2842 Automatic
Flush Bolt

Model #	Description	Finish	FLASHship™ West #	Approx. Wt. Each (Lbs)
Door Silencers				
608	Gray Rubber	N/A	285873	0.01
608CA	Clear Rubber	N/A	285874	0.01
609	Gray Rubber	N/A	285875	0.01
Door Knockers/Viewers				
614V	Knocker/w 190° Viewer	US26D	285876	0.4
620	160° Viewer	CRM	285877	0.1
622	190° Viewer	ANT	285878	0.1
622	190° Viewer	BRS	285879	0.1
622	190° Viewer	CRM	285880	0.1
622	190° Viewer	DCRM	285881	0.1
622	190° Viewer	STNN	285882	0.1
Coat Hooks				
796	Small Hook	US26D	285895	0.3
802	Medium Hook	US26D	285896	0.4
806	Medium Hook	US26D	285897	0.4
Misc. Pulls / Catches				
853	Wire Pull	US26D	285899	0.5
860	Flush Cup Pull	US32D	285900	0.9
872	Cast Flush Pull	US26D	285901	0.9
900	HD Magnetic Catch	ALM	285904	0.4
901	XHD Magnetic Catch	ALM	285905	0.4
Coordinators				
2601AB	Mounting Bracket	Black Prime Coat	285776	1
2601C	Mounting Bracket	Black Prime Coat	285777	1
2660	Coordinator	Black Prime Coat	285741	4.5
2672	Coordinator	Black Prime Coat	285778	4.5
2696	Coordinator	Black Prime Coat	285742	4.5
1700	Universal	Black Prime Coat	285775	3.5
Automatic Flush Bolts				
2842	Automatic	US26D	285779	2.4
2845	Self Latching	US26D	285780	2.4
2942	Automatic	US26D	285781	2.4
2945	Self Latching	US26D	285782	2.4
Filler Plates				
DFF4	Frame Hinge	Prime Coat	285924	0.02
LF161	Door Edge	Prime Coat	285927	0.02
DF86	Door Edge	Prime Coat	285923	0.02
SFASA	Strike	Prime Coat	285929	0.02
HS42	Hinge Shim	-	285925	0.1
HS44	Hinge Shim	-	285926	0.1

Note: FLASHship™ reserves the right to limit quantities.

Fax 877-888-2772, email flashship@assaabloy.com or use
Online Order Entry at www.assaabloydss.com/extranet by clicking the FLASHship™ icon

Note: FLASHship™ reserves the right to limit quantities.

Copyright © 2012, 2015, Rockwood Manufacturing Company, an ASSA ABLOY Group company. All rights reserved.
Reproduction in whole or in part without the express written permission of Rockwood Manufacturing Company is prohibited.

ASSA ABLOY

The global leader in
door opening solutions

ROCKWOOD®



R111LPB Trim Protector Bar

K1050 Kick Plate

Model #	Description	Finish	FLASHship™ West #	Approx. Wt. Each (Lbs)
Trim Protection Bars				
R111LPB	Lever Handle Protector	US32D	285928	4.5
Protection Plates				
K1050	4 x 35	US32D	285845	2
K1050	6 x 34	US32D	285884	3
K1050	8 x 34	US10B	285930	4.5
K1050	8 x 34	US32D	285902	4
K1050	8 x 35	US32D	285903	4.5
K1050	10 x 34	US10B	285932	5.5
K1050	10 x 34	US28	285931	3
K1050	10 x 34	US32D	285755	5
K1050	10 x 34 (4BE)	US32D	285757	5
K1050	10 x 34-1/2	US32D	285758	5
K1050	10 x 35	US32D	285759	5.5
K1050	10 x 40	US32D	285760	6
K1050	10 x 46	US32D	285761	5
K1050	12 x 34	US32D	285770	6
K1050	16 x 34	US32D	285774	8
K1050	34 x 34	US32D	285786	17

Note: FLASHship™ reserves the right to limit quantities.

ASSA ABLOY

The global leader in
door opening solutions

Fax 877-888-2772, email flashship@assaabloy.com or use
Online Order Entry at www.assaabloydss.com/extranet by clicking the FLASHship™ icon

Note: FLASHship™ reserves the right to limit quantities.

Copyright © 2012, 2015, Rockwood Manufacturing Company, an ASSA ABLOY Group company. All rights reserved.
Reproduction in whole or in part without the express written permission of Rockwood Manufacturing Company is prohibited.

RIXSON®



Fax 877-888-2772, email flashship@assaabloy.com or use
Online Order Entry at www.assaabloydss.com/extranet by clicking the FLASHship™ icon
Note: FLASHship™ reserves the right to limit quantities.

Copyright © 2015, Yale Security Inc., an ASSA ABLOY Group company. All rights reserved. Reproduction
in whole or in part without the express written permission of Yale Security Inc. is prohibited

Fax FLASHship orders to 877-888-2772 or email to flashship@assaabloy.com

ASSA ABLOY

The global leader in
door opening solutions

West Issue September 2015 55

RIXSON®



147 Offset Pivot



195 Offset Pivot



370 Center Hung Pivot


EM19 Power Transfer
Intermediate Pivot

Model #	Description	Hand	Finish	FLASHship™ West #	Approx. Wt. Each (Lbs)
3/4" Offset Pivot Sets (Includes Top Pivot)					
117	Regular (250#) Interior	RH	626	285422	3
117	Regular (250#) Interior	LH	626	285423	3
147	Regular (500#) Interior/Exterior	RH	613	285428	2
147	Regular (500#) Interior/Exterior	LH	613	285429	2
147	Regular (500#) Interior/Exterior	RH	626	285426	2
147	Regular (500#) Interior/Exterior	LH	626	285427	2
L147	Heavy Weight (700#) Lead 1-3/4" Door	RH	613	285432	5
L147	Heavy Weight (700#) Lead 1-3/4" Door	LH	613	285433	5
L147	Heavy Weight (700#) Lead 1-3/4" Door	RH	626	285430	5
L147	Heavy Weight (700#) Lead 1-3/4" Door	LH	626	285431	5
195	Regular (400#) Frame Attached	RH	613	285436	3
195	Regular (400#) Frame Attached	LH	613	285437	3
195	Regular (400#) Frame Attached	RH	626	285434	3
195	Regular (400#) Frame Attached	LH	626	285435	3
Center Hung Pivot Sets (Includes Top Pivot)					
128-3/4	250#	-	613	285441	2
128-3/4	250#	-	626	285440	2
127-3/4	250# Frame Attached	-	613	285439	2
127-3/4	250# Frame Attached	-	626	285438	2
370	400#	-	613	285443	3
370	400#	-	626	285442	3
Intermediate Pivots					
M19	Regular	RH	613	285446	2
M19	Regular	LH	613	285447	2
M19	Regular	RH	626	285444	2
M19	Regular	LH	626	285445	2
EM19	Low Voltage Transfer Pivot, E-Lynx 8-Wire	RH	626	285448	2
EM19	Low Voltage Transfer Pivot, E-Lynx 8-Wire	LH	626	285449	2

Note: FLASHship™ reserves the right to limit quantities.

ASSA ABLOY

The global leader in
door opening solutions

Fax 877-888-2772, email flashship@assaabloy.com or use
Online Order Entry at www.assaabloydss.com/extranet by clicking the FLASHship™ icon

Note: FLASHship™ reserves the right to limit quantities.

Copyright © 2015, Yale Security Inc., an ASSA ABLOY Group company. All rights reserved. Reproduction
in whole or in part without the express written permission of Yale Security Inc. is prohibited



Checkmate® Stops & Holders

994 Electromagnetic
Holder/Release

Model #	Description	Finish	FLASHship™ West #	Approx. Wt. Each (Lbs)
Checkmate® Stops and Holders				
Concealed				
1-326	Heavy Duty Holder, Size 3	613	285457	5
1-326	Heavy Duty Holder, Size 3	630	285455	5
1-336	Heavy Duty Stop, Size 3	613	285456	5
1-336	Heavy Duty Stop, Size 3	630	285454	5
6-336	Low Profile Stop, Size 3	630	285462	5
2-346	Standard Duty Adjustable Combo, Size 3	613	285465	2
2-346	Standard Duty Adjustable Combo, Size 3	630	285464	2
Surface				
9-326	Heavy Duty Holder, Size 3	613	285461	4
9-326	Heavy Duty Holder, Size 3	630	285459	4
9-336	Heavy Duty Stop, Size 3	613	285460	4
9-336	Heavy Duty Stop, Size 3	630	285458	4
10-346	Standard Duty Adjustable Combo, Size 3	613	285467	2
10-346	Standard Duty Adjustable Combo, Size 3	630	285466	2
Electromagnetic Door Holder/Releases				
Triple Voltage Door Holders (12VDC, 24VAC/DC and 120VAC)				
994	Adjustable Short Armature Concealed Wiring	689	285470	2
994	Adjustable Short Armature Concealed Wiring	690	285471	2
996	Surface Wired	689	285472	2
996	Surface Wired	690	285473	2
980	Floor Mounted	689	285468	3
980	Floor Mounted	690	285469	3
997	Wall Mounted	689	286077	2
997	Wall Mounted	690	286078	2
998	Wall Mounted	689	286079	3
998	Wall Mounted	690	286080	3
Armature Extensions				
900	Base Unit	689	285474	0.1
900	Base Unit	690	285475	0.1
900-50	1/2" Armature Extension Filler*	689	285476	0.1
900-50	1/2" Armature Extension Filler*	690	285477	0.1
900-75	3/4" Armature Extension Filler*	689	285478	0.1
900-75	3/4" Armature Extension Filler*	690	285479	0.1
900-100	1" Armature Extension Filler*	689	285480	0.1
900-100	1" Armature Extension Filler*	690	285481	0.1

*Extension spacers and bend must be used with 900 base unit armature extension

Fax 877-888-2772, email flashship@assaabloy.com or use
Online Order Entry at www.assaabloydss.com/extranet by clicking the FLASHship™ icon
Note: FLASHship™ reserves the right to limit quantities.

Copyright © 2015, Yale Security Inc., an ASSA ABLOY Group company. All rights reserved. Reproduction in whole or in part without the express written permission of Yale Security Inc. is prohibited

Fax FLASHship orders to 877-888-2772 or email to flashship@assaabloy.com

ASSA ABLOY

The global leader in
door opening solutions

Order Form

Fax To: 877.888.2772 • E-mail To: FLASHship@assaabloy.com
Attention: Customer Service

Account # _____ P.O. # _____ P.O. Date _____
 Company Name _____
 Contact Name _____
 Contact Phone _____ Contact Fax _____ Contact E-mail _____

Ship To _____
 Address _____
 City _____ State _____ Zip _____
 Attention _____

Ship Via:

- ☐ Standard: Ground
- ☐ Next Day: Freight Pre-Paid and Added to Customer Invoice
- ☐ 2nd Day: Freight Pre-Paid and Added to Customer Invoice

Instructions:

1. Orders should be submitted on this form to qualify for FLASHship™.
2. Factory lead times apply if ANY items on the order are NOT listed in the current published *FLASHship* offering.
3. Orders can not be changed or cancelled.

[illegible]

Order Form

Fax To: 877.888.2772 • E-mail To: FLASHship@assaabloy.com
Attention: Customer Service

Page _____ of _____

Account #: _____ P.O. #: _____

Company Name: _____

Instructions:

1. Orders should be submitted on this form to qualify for FLASHship™.
2. Factory lead times apply if ANY items on the order are NOT listed in the current published *FLASHship* offering.
3. Orders cannot be changed or cancelled.

[illegible]

ASSA ABLOY is the global leader in door opening solutions, dedicated to satisfying end-user needs for security, safety and convenience

ASSA ABLOY

Industry-Leading Brands

To bring you the best and most complete security and life-safety solutions, ASSA ABLOY provides the products of brands known for quality, service and innovation. This group of hardware manufacturers works together to create openings that are strong, durable and meet today's needs for advanced safety and security solutions.

MARKAR | www.markar.com
Complete range of continuous hinges

McKINNEY | www.mckinneyhinge.com
Standard hinges, electric hinges, decorative hinges, specialty hinges, and custom hinges

PEMKO | www.pemko.com
Thresholds, gasketing products, continuous geared hinges, lites, louvers and accessories

RIXSON | www.rixson.com
Concealed closers, pivots and mechanical/electromechanical door holders

ROCKWOOD | www.rockwoodmfg.com
Architectural door pulls, door stops and holders, bolts and latches, specialty door trim

YALE | www.yalelocks.com
Mortise, cylindrical & auxiliary locks, exit devices, door closers, electromechanical products, and key systems

ASSA ABLOY Door Security Solutions
110 Sargent Drive
New Haven, CT 06511
800.DSS.EZ4U (377.3948) | 203.624.5225
www.assaabloydss.com

**We are where you are.
Connect with us online:**



www.facebook.com/assaabloydss



www.twitter.com/assaabloydssus

Copyright © 2015, ASSA ABLOY Door Security Solutions, an ASSA ABLOY Group company. All rights reserved. Reproduction in whole or in part without the express written permission of ASSA ABLOY Door Security Solutions is prohibited.

2500-2883 9/15N